

Franklin County 911

Board Presentation

[February 20, 2024]

Franklin County, Illinois



Board Presentation for:
Franklin County, IL 911

Feb. 20, 2024

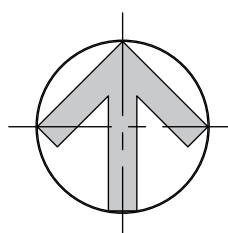
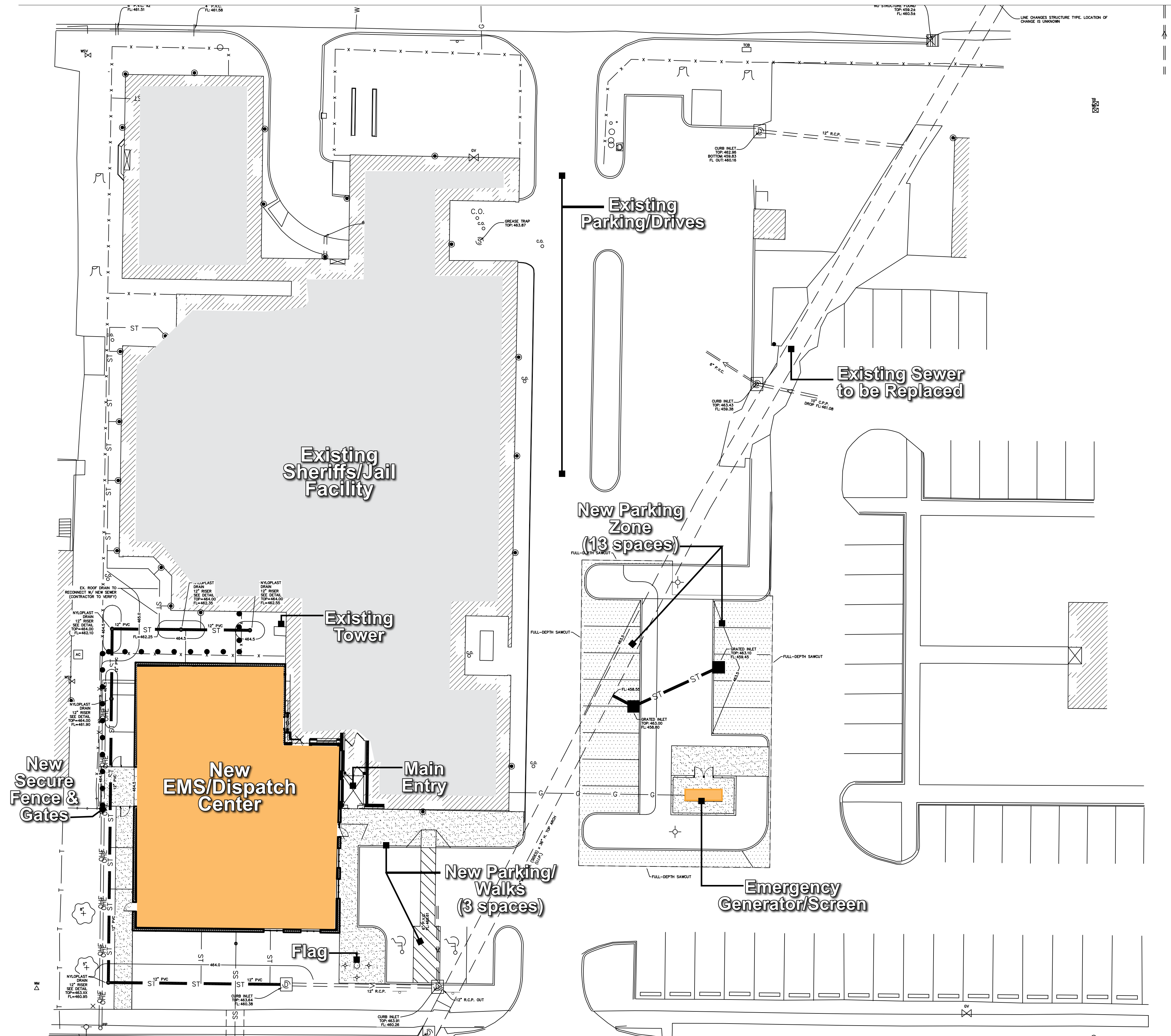
6400 W. Main St., Ste 1Q
Belleville, IL 62223
(618) 623-9252

14205 W. 95th Street
Lenexa, KS 66215
(913) 378-9533

143 W. Clinton Place
St. Louis, MO 63122
(314) 965-7445

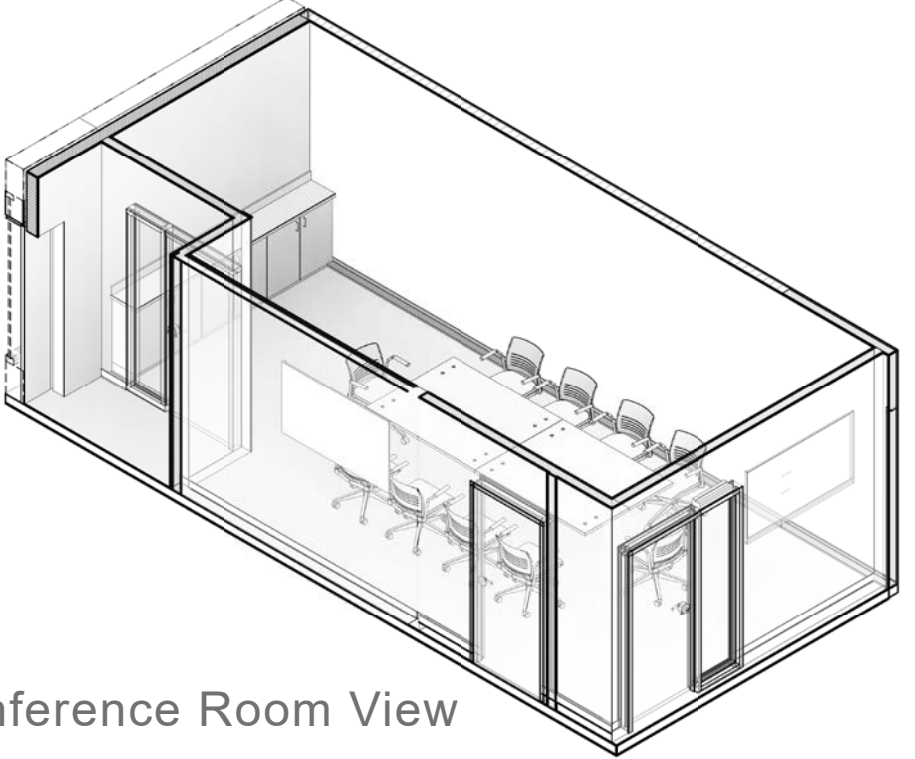
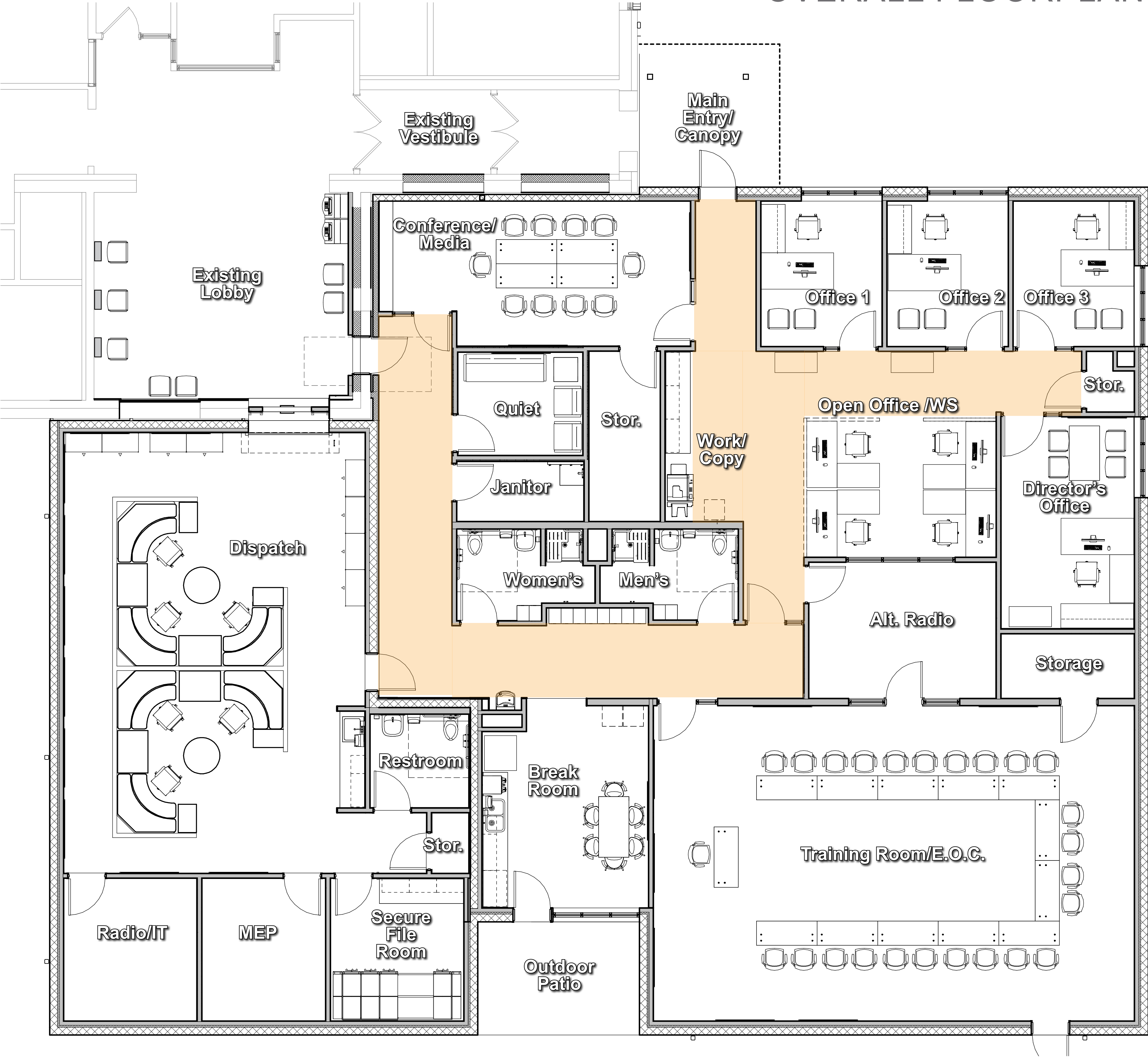


Ai #123706

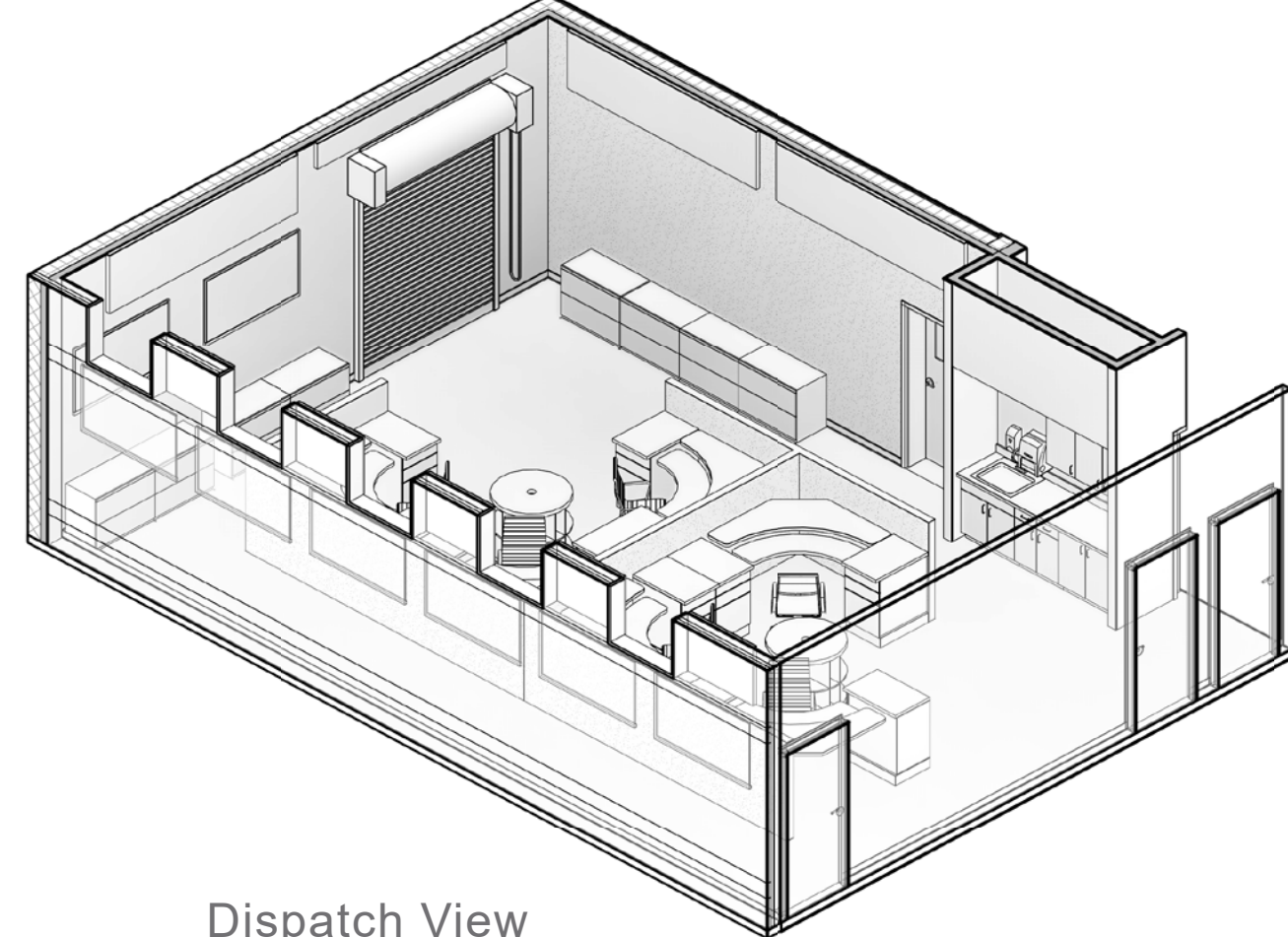


OVERALL FLOORPLAN

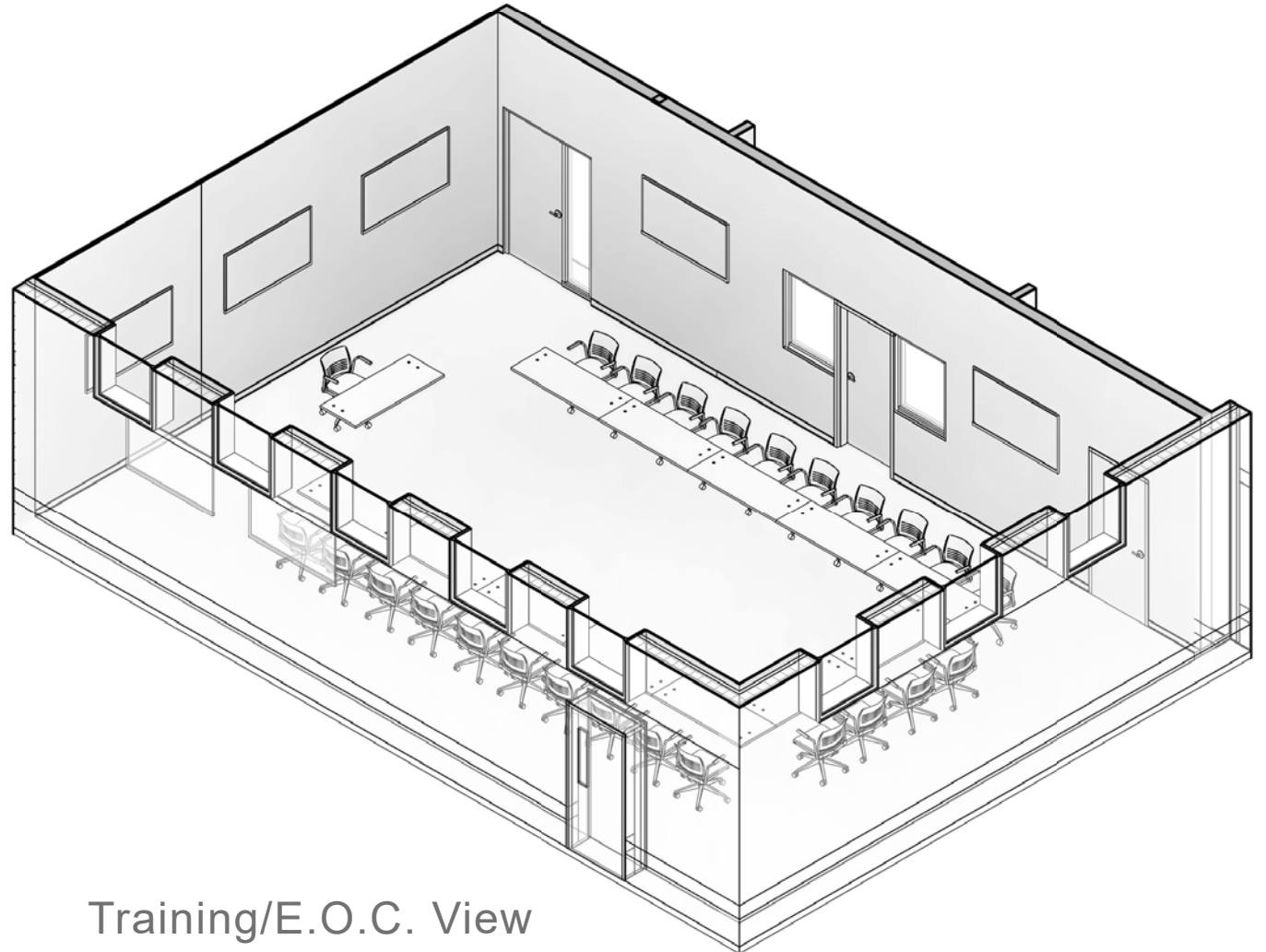
3D ROOM VIEWS



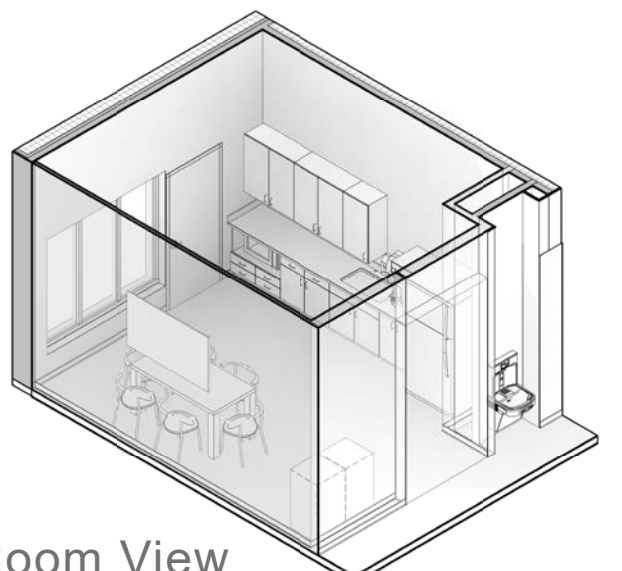
Conference Room View



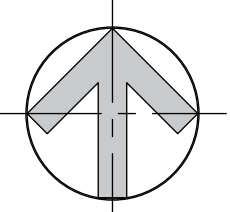
Dispatch View



Training/E.O.C. View



Break Room View



Board Presentation for:
Franklin County, IL 911

Feb. 20, 2024

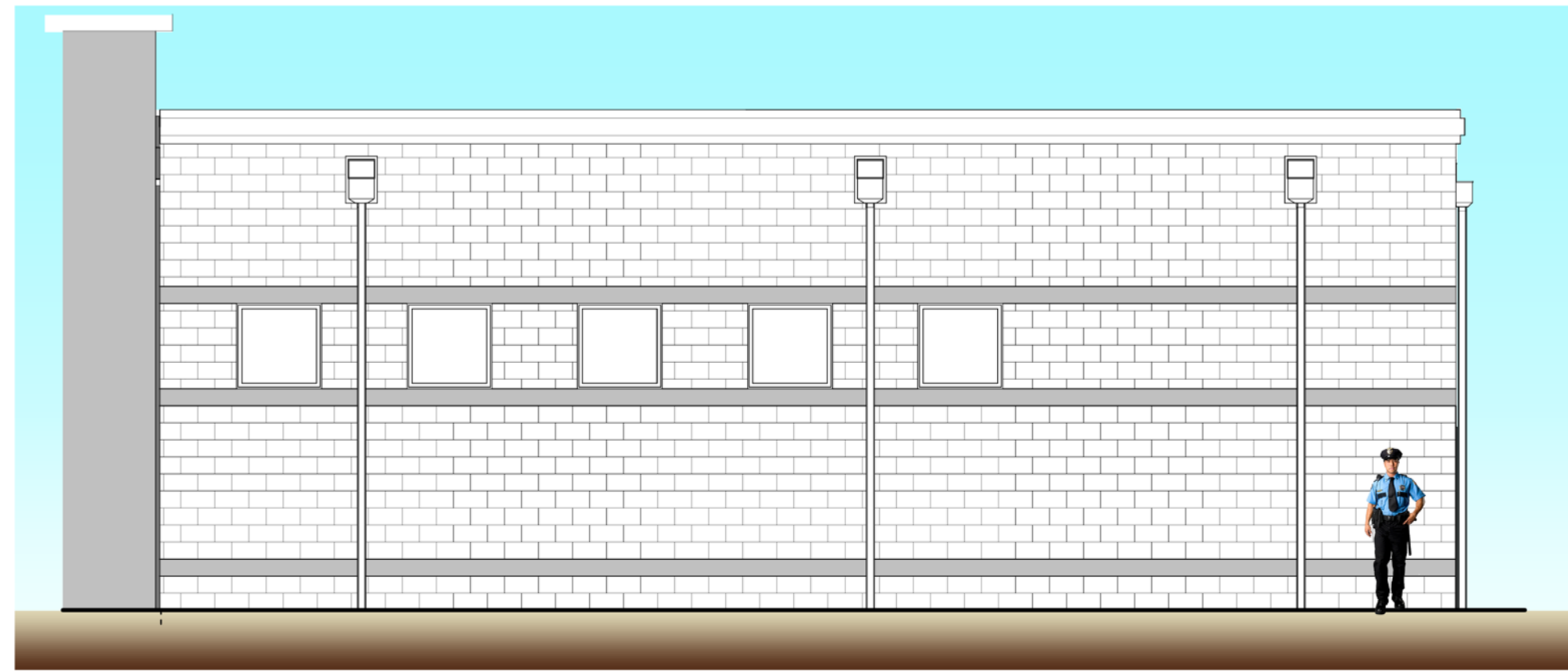
6400 W. Main St., Ste 1Q
Belleville, IL 62223
(618) 623-9252

14205 W. 95th Street
Lenexa, KS 66215
(913) 378-9533

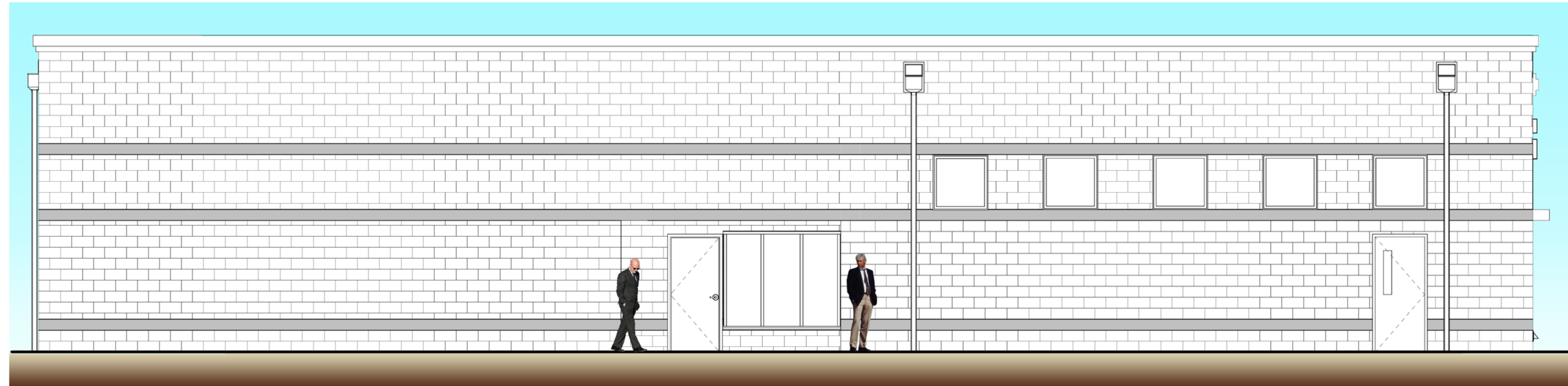
143 W. Clinton Place
St. Louis, MO 63122
(314) 965-7445



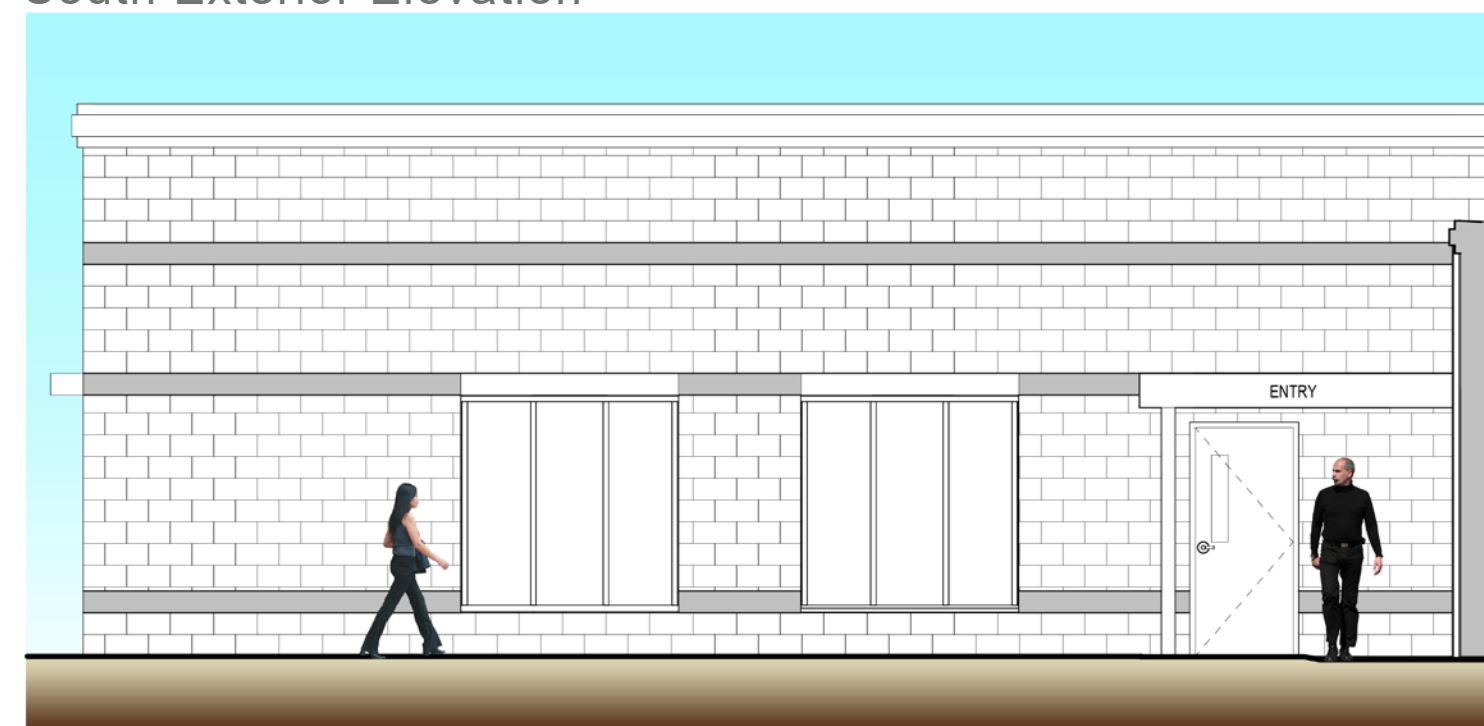
Ai #123706



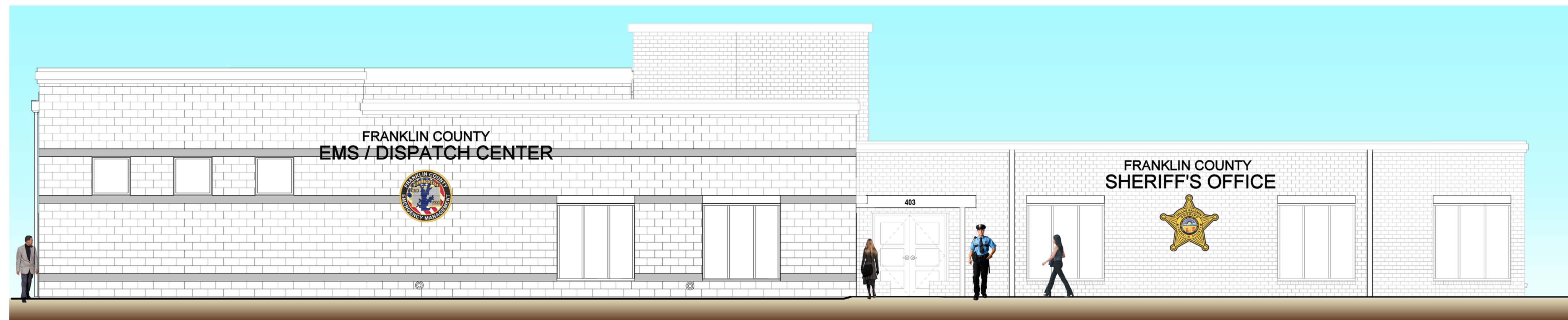
West Exterior Elevation



South Exterior Elevation

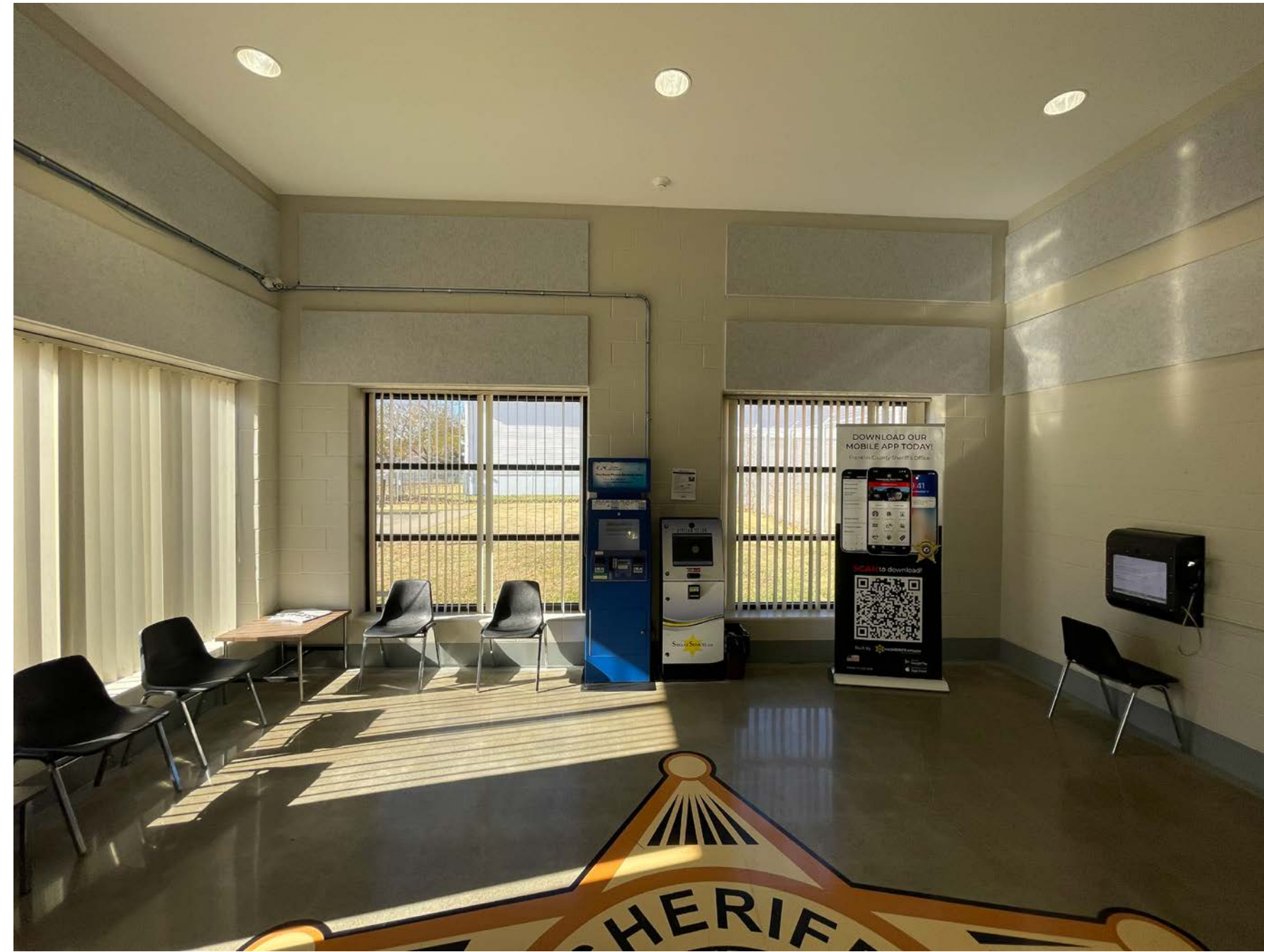


North Exterior Elevation



East Exterior Elevation

MAIN LOBBY RECEPTION WINDOW



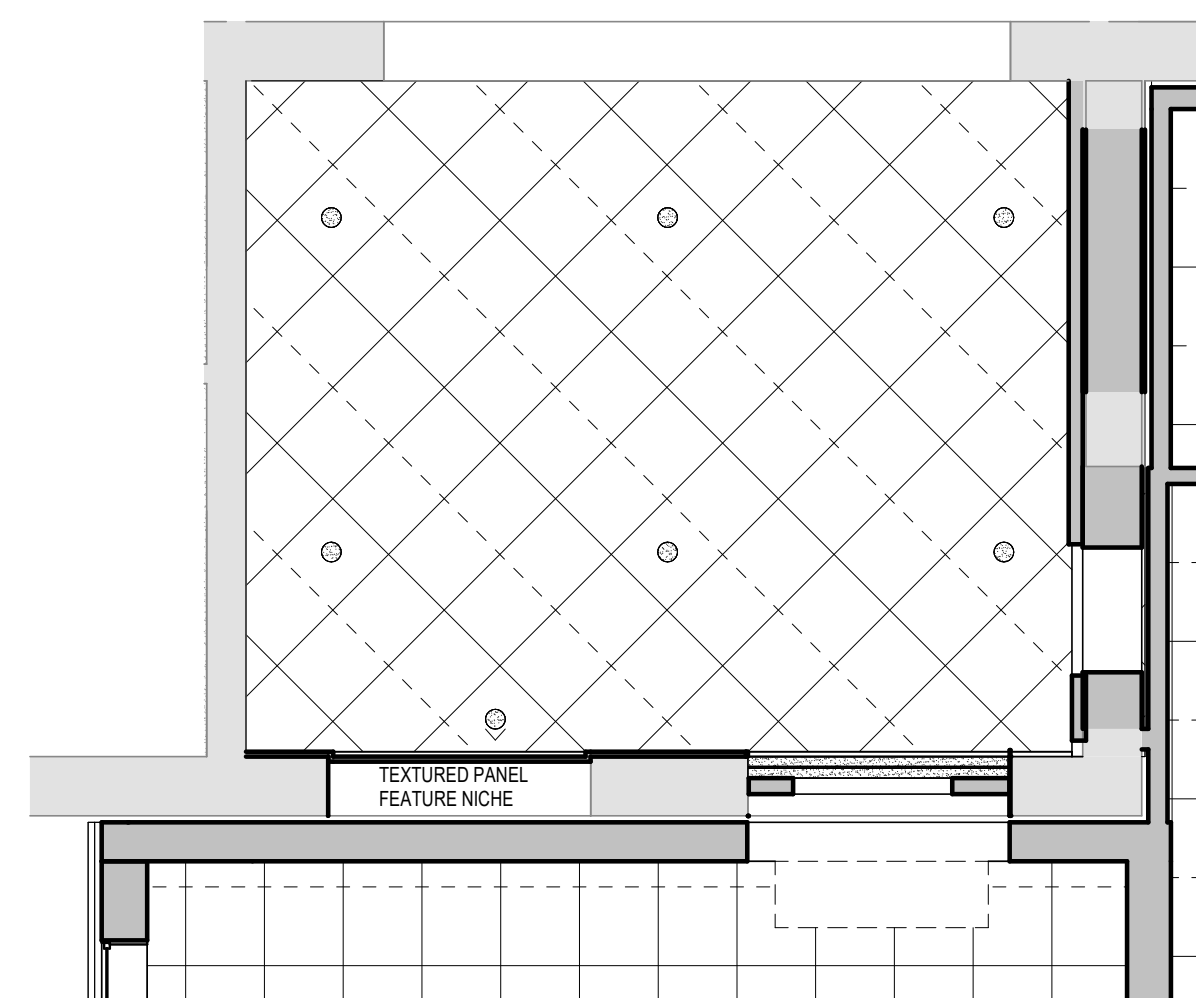
Existing Lobby - demo windows, vertical blinds, acoustical panels, conduit



3D view Service window with portal surround and feature niche with signage



Concept image portal design element



Lobby ceiling new acoustical ceiling with recessed LED can lights



Board Presentation for:
Franklin County, IL 911

Feb. 20, 2024

6400 W. Main St., Ste 1Q
Belleville, IL 62223
(618) 623-9252

14205 W. 95th Street
Lenexa, KS 66215
(913) 378-9533

143 W. Clinton Place
St. Louis, MO 63122
(314) 965-7445



Ai #123706