



PCO #038

Fager-McGee Commercial Construction, Inc
 347 S Williams St
 Murphysboro, Illinois 62966
 Phone: (618) 687-3900
 Fax: (618) 687-3639

Project: 3925 - Franklin Co. Courthouse
 100 Public Square
 Benton, Illinois 62812
 Phone: 618-687-3900
 Fax: 618-687-3639

Prime Contract Potential Change Order #038: Detention Access Panel(s)

TO:	The County of Franklin, Illinois 100 Public Square Benton, Illinois 62812	FROM:	Fager-McGee Commercial Construction, Inc. 347 S. Williams Street Murphysboro, Illinois 62966
PCO NUMBER/REVISION:	038 / 0	CONTRACT:	1 - Prime Contract
REQUEST RECEIVED FROM:		CREATED BY:	Sam Loiacono (Fager-McGee Commercial Construction, In)
STATUS:	Pending - In Review	CREATED DATE:	11/8/2021
REFERENCE:		PRIME CONTRACT CHANGE ORDER:	None
FIELD CHANGE:	No		
LOCATION:		ACCOUNTING METHOD:	Amount Based
SCHEDULE IMPACT:		PAID IN FULL:	No
EXECUTED:	No	SIGNED CHANGE ORDER RECEIVED DATE:	
		TOTAL AMOUNT:	\$0.00

POTENTIAL CHANGE ORDER TITLE: Detention Access Panel(s)

CHANGE REASON: Design Development

POTENTIAL CHANGE ORDER DESCRIPTION: *(The Contract Is Changed As Follows)*
Detention Access Panels

- Ceiling Access Panels for Detention Areas.
- Labor and Materials to install (7) 24" x 24" access doors.
- (1) Sallyport 126
- (1) Corridor 100L
- (1) Corridor 100K
- (1) Passage 200Q
- (1) Group Holding 216
- (1) Passage 300Q
- (1) Passage 314

ATTACHMENTS:

1st, 2nd, & 3rd Floor Reflected Ceiling Plan.pdf , _Hoelscher estimate backup 11-8-2021.pdf

#	Budget Code	Description	Amount
1	09-0300.S Metal Studs & Drywall.Subcontracts	Detention Access Panels	\$11,375.00
Subtotal:			\$11,375.00
Profit & Overhead (10.00% Applies to Other, Equip & Other, Material, Labor Burden, and Labor.):			\$0.00
Profit & Overhead on Subcontractors (5.00% Applies to Subcontracts.):			\$568.75
Builders Risk Insurance (1.44% Applies to all line item types.):			\$171.99
From Project Contingency (-100.00% Applies to all line item types.):			\$(12,115.74)
Grand Total:			\$0.00



Nicholas Williams

Van Voyles (White & Borgognoni Architects)

212 N. Illinois Avenue
Carbondale, Illinois 62901

The County of Franklin, Illinois

100 Public Square
Benton, Illinois 62812

Fager-McGee Commercial Construction, Inc.

347 S. Williams Street
Murphysboro, Illinois 62966

[Handwritten Signature] 12/13/21
SIGNATURE DATE

[Handwritten Signature] 12/16/21
SIGNATURE DATE

[Handwritten Signature], UPLC 12/13/21
SIGNATURE DATE



Additional Work Order Form

Date: November 08, 2021

Attn: Sam Loiacono
Job Name: Franklin Co-New Courthouse
Job Number: 20-213
General Fax Number:
Hoelscher Change Order/Claim: #01
Arch/General Work Order:

Description of Changes

Add install supply and install 1-24"x24" security ceiling access panel in the security ceilings. The access panels have to be install in the 24" wide panels and cannot be install two different panels. The panels have keyed openings.

Material:	\$1,085.00
Labor:	\$395.00
Tool & Equip. Rental:	\$0.00
Deliver Fees:	\$0.00
Total:	\$1,480.00
<u>Overhead & Profit:</u>	<u>\$145.00</u>

Grand Total: \$1,625.00

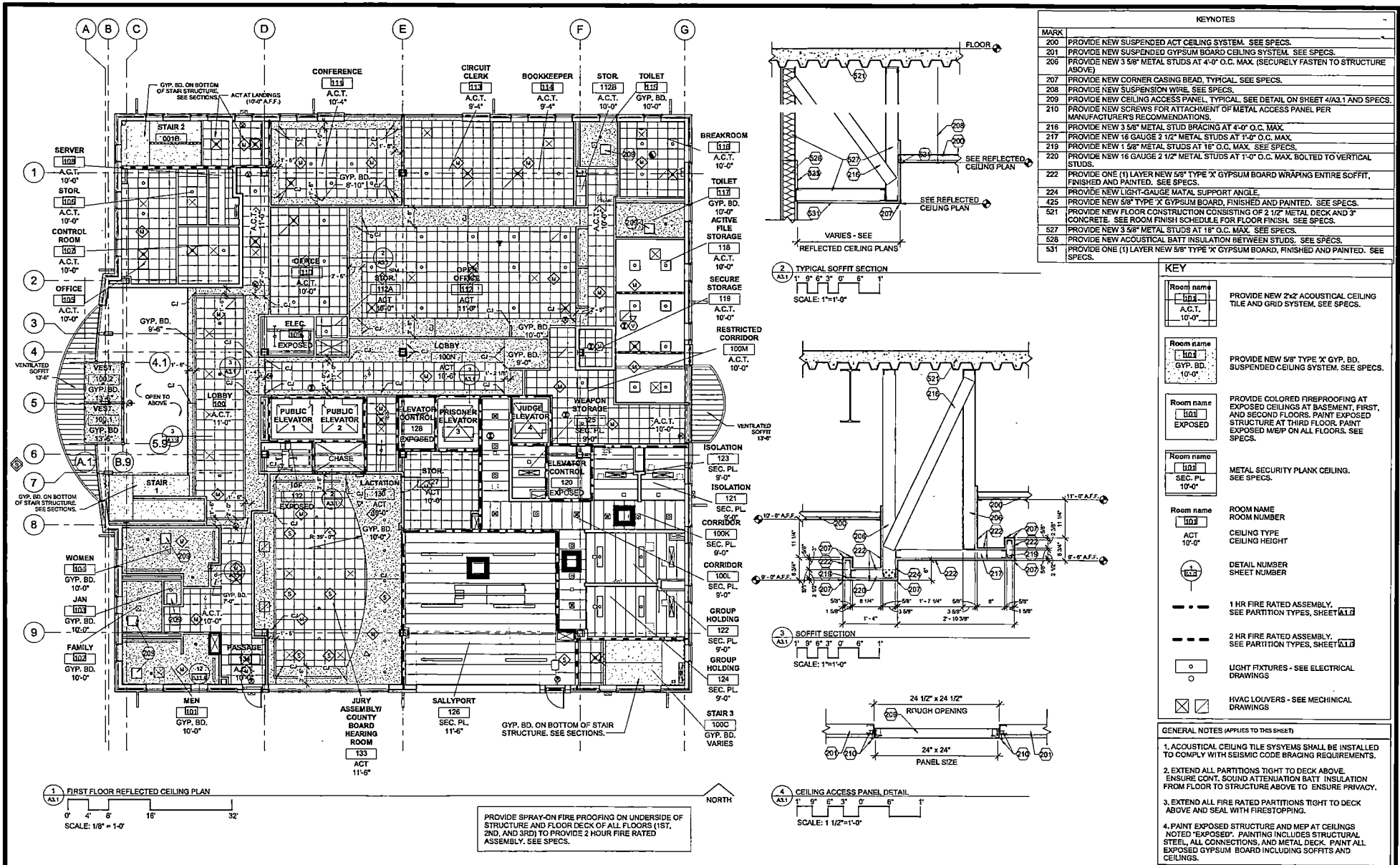
Total Add \$1,625.00

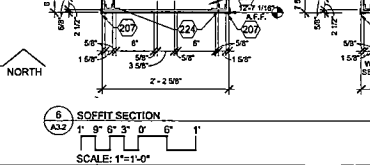
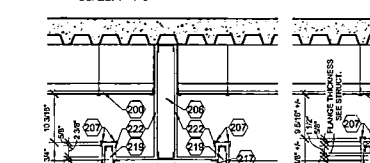
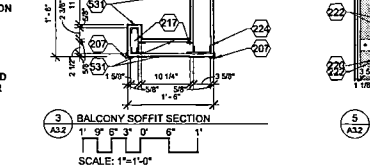
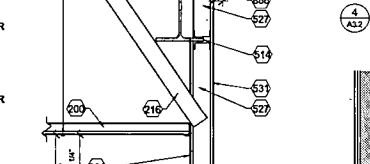
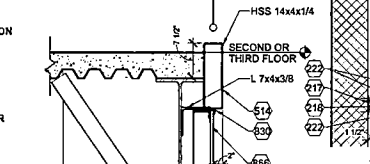
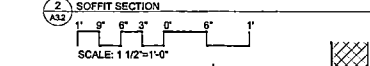
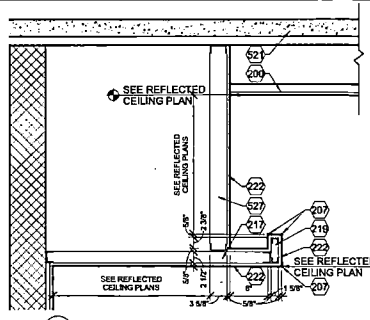
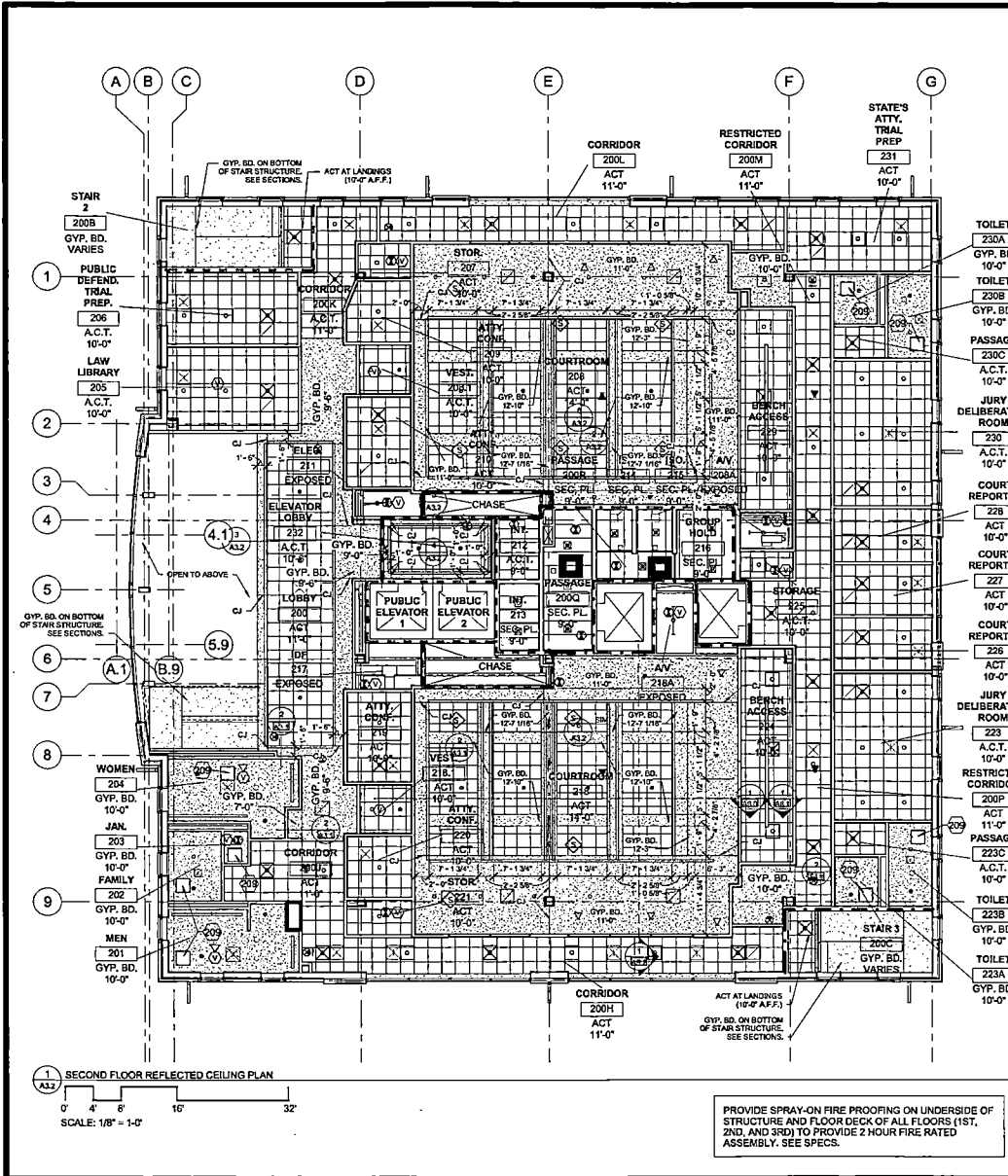
**Additional days on the schedule will be required to complete this work
Includes all notes and exclusions as on bid form and contract
Price is good for 10 days, after that it's subject to change without notice
Please sign and return if approved**

General Contractor

Jay S Hoelscher
Hoelscher Interiors, Inc.

398 North Clement Street * Aviston, IL. 62216
Phone (618) 228-7420 * Fax (618) 228-7426





KEYNOTES	
200	PROVIDE NEW SUSPENDED ACT CEILING SYSTEM. SEE SPECS.
206	PROVIDE NEW 3 5/8" METAL STUDS AT 4'-0" O.C. MAX. (SECURELY FASTEN TO STRUCTURE ABOVE)
207	PROVIDE NEW CORNER CASING BEAD, TYPICAL. SEE SPECS.
209	PROVIDE NEW CEILING ACCESS PANEL, TYPICAL. SEE DETAIL ON SHEET 4/A3.1 AND SPECS.
216	PROVIDE NEW 3 5/8" METAL STUD BRACING AT 4'-0" O.C. MAX.
217	PROVIDE NEW 16 GAUGE 2 1/2" METAL STUDS AT 1'-0" O.C. MAX.
218	PROVIDE NEW 2X2 STEEL SQUARE TUBE BOLTED TO MASONRY.
219	PROVIDE NEW 1 5/8" METAL STUDS AT 16" O.C. MAX. SEE SPECS.
220	PROVIDE NEW 16 GAUGE 2 1/2" METAL STUDS AT 1'-0" O.C. MAX. BOLTED TO VERTICAL STUDS.
221	PROVIDE NEW 7/8" METAL FURRING CHANNELS AT 16" O.C. MAX. SEE SPECS.

KEYNOTES	
222	PROVIDE ONE (1) LAYER NEW 5/8" TYPE 'X' GYPSUM BOARD WRAPING ENTIRE SOFFIT, FINISHED AND PAINTED. SEE SPECS.
223	PROVIDE NEW BLOCKING.
224	PROVIDE NEW LIGHT-GAUGE METAL SUPPORT ANGLE.
514	PROVIDE NEW STRUCTURAL STEEL. SEE STRUCTURAL DRAWINGS AND SPECS.
521	PROVIDE NEW FLOOR CONSTRUCTION CONSISTING OF 2 1/2" METAL DECK AND 3" CONCRETE. SEE FLOOR FINISH SCHEDULE FOR FLOOR FINISH. SEE SPECS.
527	PROVIDE NEW 3 5/8" METAL STUDS AT 16" O.C. MAX. SEE SPECS.
531	PROVIDE ONE (1) LAYER NEW 5/8" TYPE 'X' GYPSUM BOARD, FINISHED AND PAINTED. SEE SPECS.
830	PROVIDE NEW CONTINUOUS SEALANT. SEE SPECS.
886	PROVIDE NEW GYP. BD. "J" MOLD. SEE SPECS.

KEY	
Room name [A32] A.C.T. 10'-0"	PROVIDE NEW 2x2' ACOUSTICAL CEILING TILE AND GRD SYSTEM. SEE SPECS.
Room name [A33] GYP. BD. 10'-0"	PROVIDE NEW 5/8" TYPE 'X' GYP. BD. SUSPENDED CEILING SYSTEM. SEE SPECS.
Room name [A34] EXPOSED	PROVIDE COLORED FIREPROOFING AT EXPOSED BASEMENT, FIRST, AND SECOND FLOORS. PAINT EXPOSED STRUCTURE AT THIRD FLOOR. PAINT EXPOSED MEP ON ALL FLOORS. SEE SPECS.
Room name [A35] SEC. PL. 10'-0"	METAL SECURITY PLANK CEILING. SEE SPECS.
Room name [A36] ACT 10'-0"	ROOM NAME ROOM NUMBER CEILING TYPE CEILING HEIGHT
[A37]	DETAIL NUMBER SHEET NUMBER
[A38]	1 HR FIRE RATED ASSEMBLY. SEE PARTITION TYPES, SHEET [A31]
[A39]	2 HR FIRE RATED ASSEMBLY. SEE PARTITION TYPES, SHEET [A31]
[A40]	LIGHT FIXTURES - SEE ELECTRICAL DRAWINGS
[A41]	HVAC LOUVERS - SEE MECHANICAL DRAWINGS

GENERAL NOTES (APPLIES TO THIS SHEET)

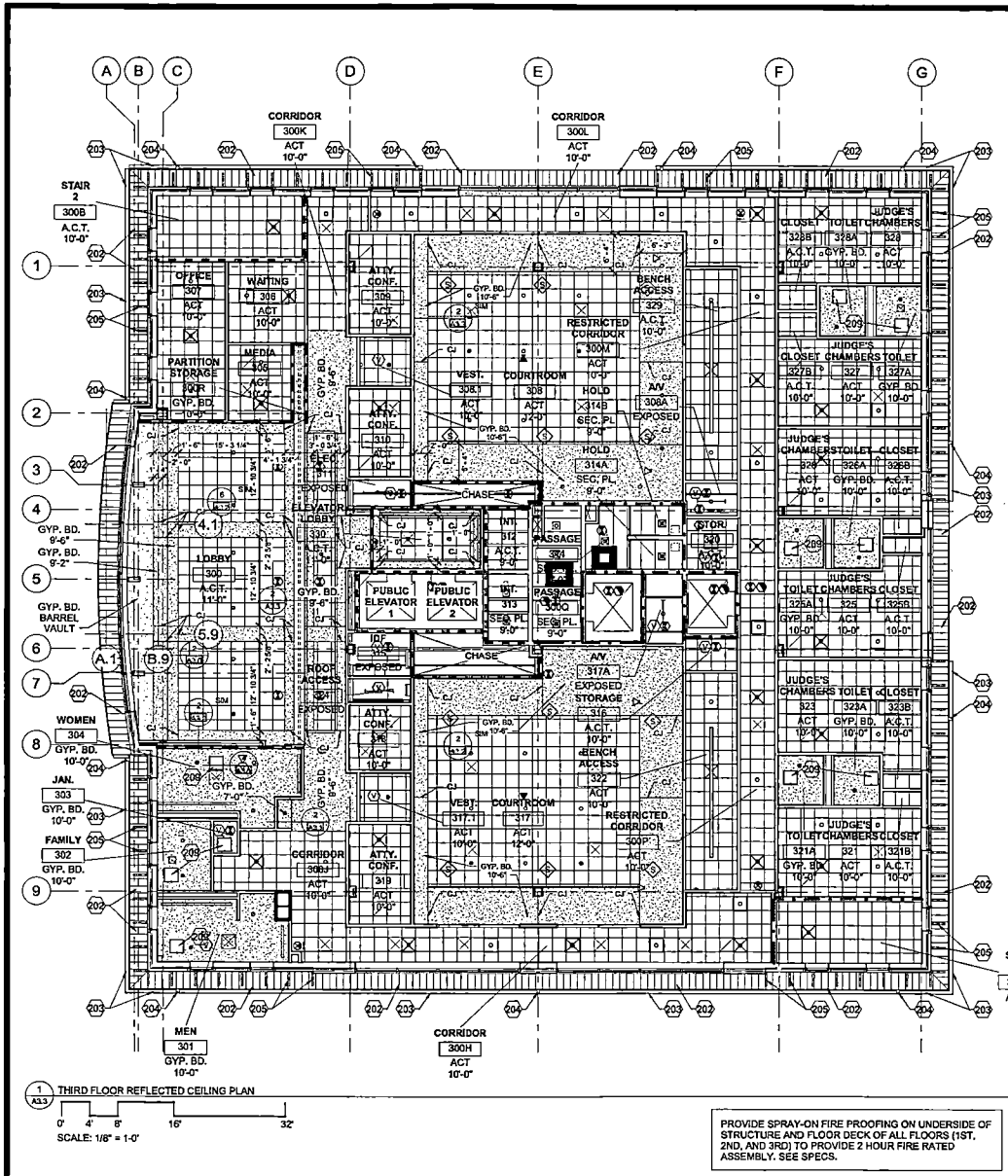
- ACOUSTICAL CEILING TILE SYSTEMS SHALL BE INSTALLED TO COMPLY WITH SEISMIC CODE BRACING REQUIREMENTS.
- EXTEND ALL PARTITIONS TIGHT TO DECK ABOVE. ENSURE CONT. SOUND ATTENUATION BATT INSULATION FROM FLOOR TO STRUCTURE ABOVE TO ENSURE PRIVACY.
- EXTEND ALL FIRE RATED PARTITIONS TIGHT TO DECK ABOVE AND SEAL WITH FIRESTOPPING.
- PAINT EXPOSED STRUCTURE AND MEP AT CEILINGS NOTED "EXPOSED". PAINTING INCLUDES STRUCTURAL STEEL, ALL CONNECTIONS, AND METAL DECK. PAINT ALL EXPOSED GYPSUM BOARD INCLUDING SOFFITS AND CEILINGS.

wba ARCHITECTURE • DESIGN • PRESERVATION
 212 North Illinois Avenue
 Carbondale, Illinois 62901-1452
 Telephone (618) 829-3691
 www.wb-architects.com

PROJECT: NEW FRANKLIN COUNTY COURTHOUSE
 LOCATION: [A32] PUBLIC SQUARE, BENTON, IL 62812

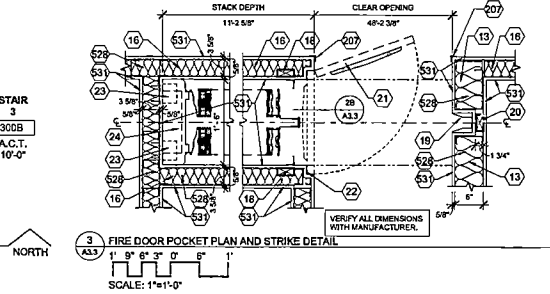
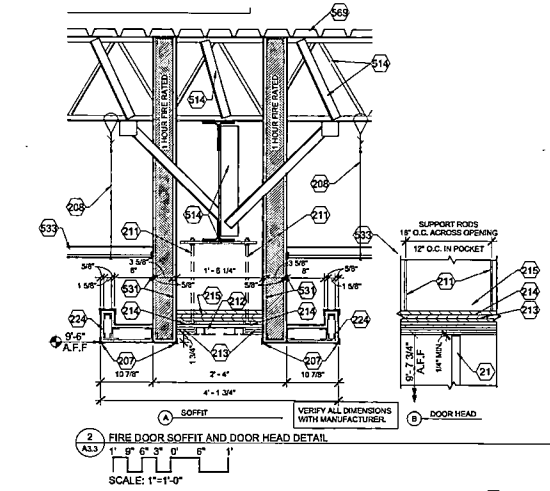
SHEET TITLE: SECOND FLOOR REFLECTED CEILING PLAN
 COPYRIGHT © 2020
 WHITE & BORGOGNONI ARCHITECTS, P.C.
 ALL RIGHTS RESERVED
 ILLINOIS REGISTERED PROFESSIONAL
 SERVICE CORPORATION #609-003955

PROJECT NO. 19-31-057/072
 DATE: JUNE 30, 2020
 DRAWN: KMH
 REVISIONS:
 APPR: VVV
 STATE OF ILLINOIS
 EXP. 11/03/20
 VANK
 07/02/04
 11/14/14
 REGISTERED ARCHITECT
 SHEET NUMBER
A3.2
 OF 76 SHEETS



KEYNOTES	
13	PROVIDE NEW 6" METAL STUDS AT 1'-4" O.C. MAX. SEE SPECS. TYPICAL.
16	PROVIDE NEW 3 5/8" METAL STUDS AT 1'-4" O.C. MAX. SEE SPECS. TYPICAL.
18	PROVIDE NEW CONTINUOUS BLOCKING PLACED 6" FROM THE FACE OF THE POCKET.
19	RECESSED STRIKER, BY MANUFACTURER.
20	PROVIDE NEW CONTINUOUS BLOCKING.
21	PROVIDE NEW COVER DOOR WITH SPRING OPENER AND CONTINUOUS HINGE.
22	PROVIDE NEW MAGNETIC CATCH (MUST NOT EXCEED 30 LBS. RESISTANCE).
23	PROVIDE NEW 4"x4" JOISTS. SEE ELECTRICAL PLANS.
24	CONTROL BOX MOUNTED AT THE BACK OF THE POCKET, BY MANUFACTURER.
202	PROVIDE NEW COLOR COATED METAL CONCEALED FASTENER VENTILATED SOFFIT. SEE ROOF DETAILS AND SPECS.
203	PROVIDE NEW COLOR COATED METAL GUTTER. SEE ROOF DETAILS AND SPECS.
204	PROVIDE NEW COLOR COATED METAL DOWNSPOUT. DISCHARGE INTO BELOW-GRADE DRAINAGE. SEE SPECS.
205	PROVIDE NEW BRACKETS - TYPICAL. SEE SPECS.
207	PROVIDE NEW CORNER CASING BEAD, TYPICAL. SEE SPECS.
208	PROVIDE NEW SUSPENSION WIRE. SEE SPECS.
209	PROVIDE NEW CEILING ACCESS PANEL, TYPICAL. SEE DETAIL ON SHEET 4/A3.1 AND SPECS.
211	PROVIDE NEW 1/2" DIA. THREADED RODS WITH NUTS AND WASHERS, PER MANUFACTURER'S RECOMMENDATIONS. SEE SPECS.
212	SMOKE PARTITION TRACK ASSEMBLY, BY MANUFACTURER.

KEYNOTES	
213	PROVIDE NEW (3) LAYERS OF 1/2" TYPE 'X' GYP. BD. RUNNING THE ENTIRE LENGTH OF OPENING AND TERMINATING 1'-0" FROM THE BACK OF POCKET.
214	PROVIDE NEW (2) LAYER OF 5/8" TYPE 'X' GYP. BD. RUNNING THE ENTIRE LENGTH OF OPENING AND TERMINATING 1'-0" FROM THE BACK OF POCKET.
215	(3) LAYERS OF 3/4" PLYWOOD RUNNING THE ENTIRE LENGTH OF POCKET, BY MANUFACTURER.
224	PROVIDE NEW LIGHT-GAUGE METAL SUPPORT ANGLE.
514	PROVIDE NEW STRUCTURAL STEEL. SEE STRUCTURAL DRAWINGS AND SPECS.
528	PROVIDE NEW ACOUSTICAL BATT INSULATION BETWEEN STUDS. SEE SPECS.
531	PROVIDE ONE (1) LAYER NEW 5/8" TYPE 'X' GYPSUM BOARD, FINISHED AND PAINTED. SEE SPECS.
533	PROVIDE NEW SUSPENDED ACT CEILING SYSTEM. SEE REFLECTED CEILING PLAN AND SPECS.
569	PROVIDE NEW METAL ROOF DECK. SEE STRUCTURAL DRAWINGS AND SPECS.



KEY	
Room name [Symbol] ACT 10'-0"	PROVIDE NEW 2x2 ACOUSTICAL CEILING TILE AND GRID SYSTEM. SEE SPECS.
Room name [Symbol] GYP. BD 10'-0"	PROVIDE NEW 5/8" TYPE 'X' GYP. BD. SUSPENDED CEILING SYSTEM. SEE SPECS.
Room name [Symbol] EXPOSED	PROVIDE COLORED FIREPROOFING AT EXPOSED CEILINGS AT BASEMENT, FIRST, AND SECOND FLOORS. PAINT EXPOSED STRUCTURE AT THIRD FLOOR. PAINT EXPOSED M/E/P ON ALL FLOORS. SEE SPECS.
Room name [Symbol] SEC. PL. 10'-0"	METAL SECURITY PLANK CEILING. SEE SPECS.
Room name [Symbol] ACT 10'-0"	ROOM NAME ROOM NUMBER CEILING TYPE CEILING HEIGHT
[Symbol]	DETAIL NUMBER SHEET NUMBER
[Symbol]	1 HR FIRE RATED ASSEMBLY SEE PARTITION TYPES, SHEET 4/A3.1
[Symbol]	2 HR FIRE RATED ASSEMBLY SEE PARTITION TYPES, SHEET 4/A3.1
[Symbol]	LIGHT FIXTURES - SEE ELECTRICAL DRAWINGS
[Symbol]	HVAC LOUVERS - SEE MECHANICAL DRAWINGS

- GENERAL NOTES (APPLIES TO THIS SHEET)
1. ACOUSTICAL CEILING TILE SYSTEMS SHALL BE INSTALLED TO COMPLY WITH SEISMIC CODE BRACING REQUIREMENTS.
 2. EXTEND ALL PARTITIONS TIGHT TO DECK ABOVE. ENSURE CONT. SOUND ATTENUATION BATT INSULATION FROM FLOOR TO STRUCTURE ABOVE TO ENSURE PRIVACY.
 3. EXTEND ALL FIRE RATED PARTITIONS TIGHT TO DECK ABOVE AND SEAL WITH FIRESTOPPING.
 4. PAINT EXPOSED STRUCTURE AND MEP AT CEILINGS NOTED "EXPOSED". PAINTING INCLUDES STRUCTURAL STEEL, ALL CONNECTIONS, AND METAL DECK. PAINT ALL EXPOSED GYPSUM BOARD INCLUDING SOFFITS AND CEILINGS.

wba ARCHITECTURE · DESIGN · PRESERVATION
 212 North Illinois Avenue
 Carbondale, Illinois 62901-1452
 Telephone (618) 529-3891
 www.wb-architects.com

PROJECT: NEW FRANKLIN COUNTY COURTHOUSE
 LOCATION: PUBLIC SQUARE, BENTON, IL 62812

SHEET TITLE: THIRD FLOOR REFLECTED CEILING PLAN
 COPYRIGHT © 2020
 WHITE & BORGOGNONI ARCHITECTS, P.C.
 ALL RIGHTS RESERVED

PROJECT NO. 19-31-057072
 DATE: JUNE 30, 2020
 DRAWN: KMGH
 REVISIONS:
 APPR: VVV

STATE OF ILLINOIS
 EXP. 11/02/20
 VVV
 VVV
 VVV
 LICENSED ARCHITECT

SHEET NUMBER
A3.3
 OF 76 SHEETS