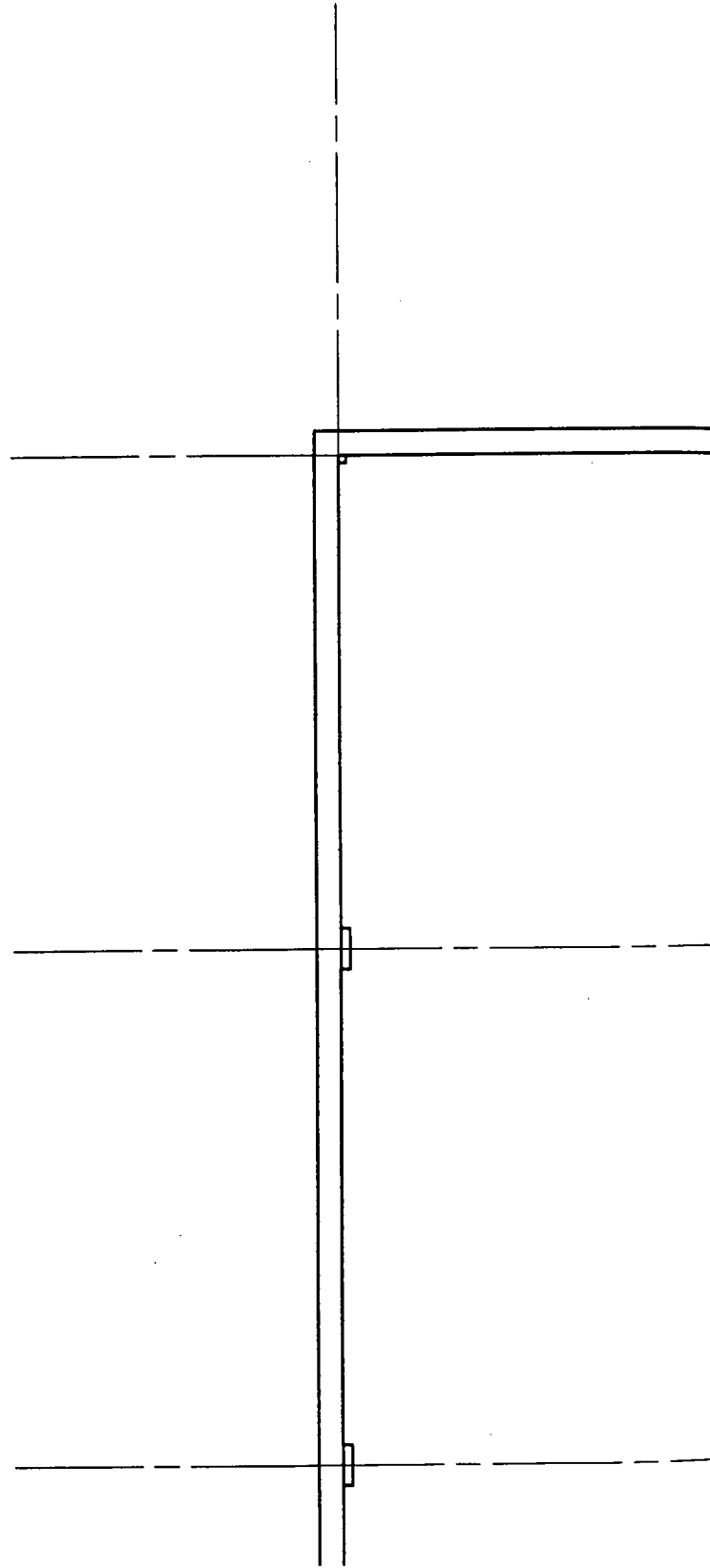
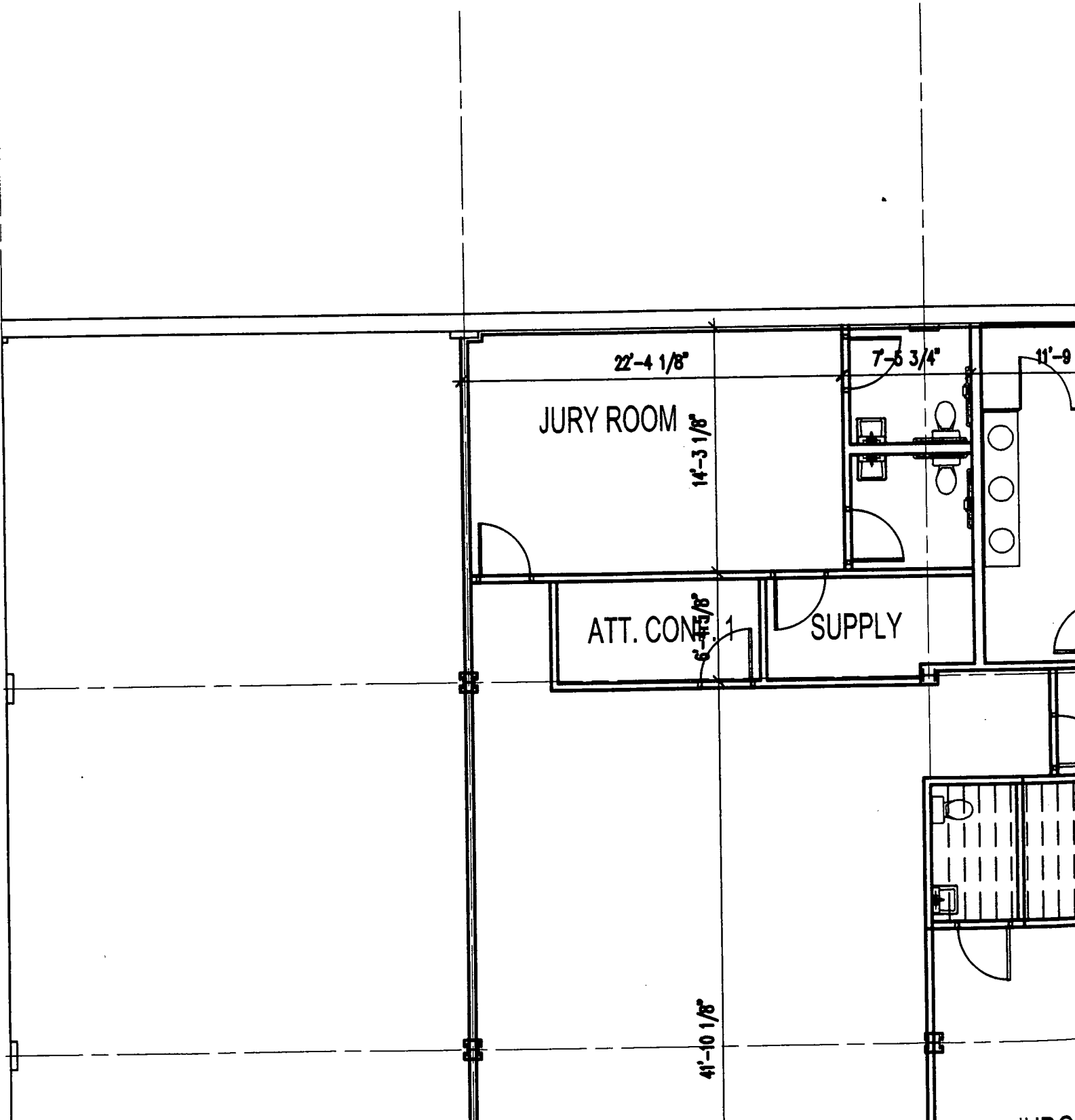


י"ד ו' ט"ז תמוז ה'תש"ז / משרד המשפטים / תל אביב





22'-4 1/8"

JURY ROOM

14'-3 1/8"

7'-5 3/4"

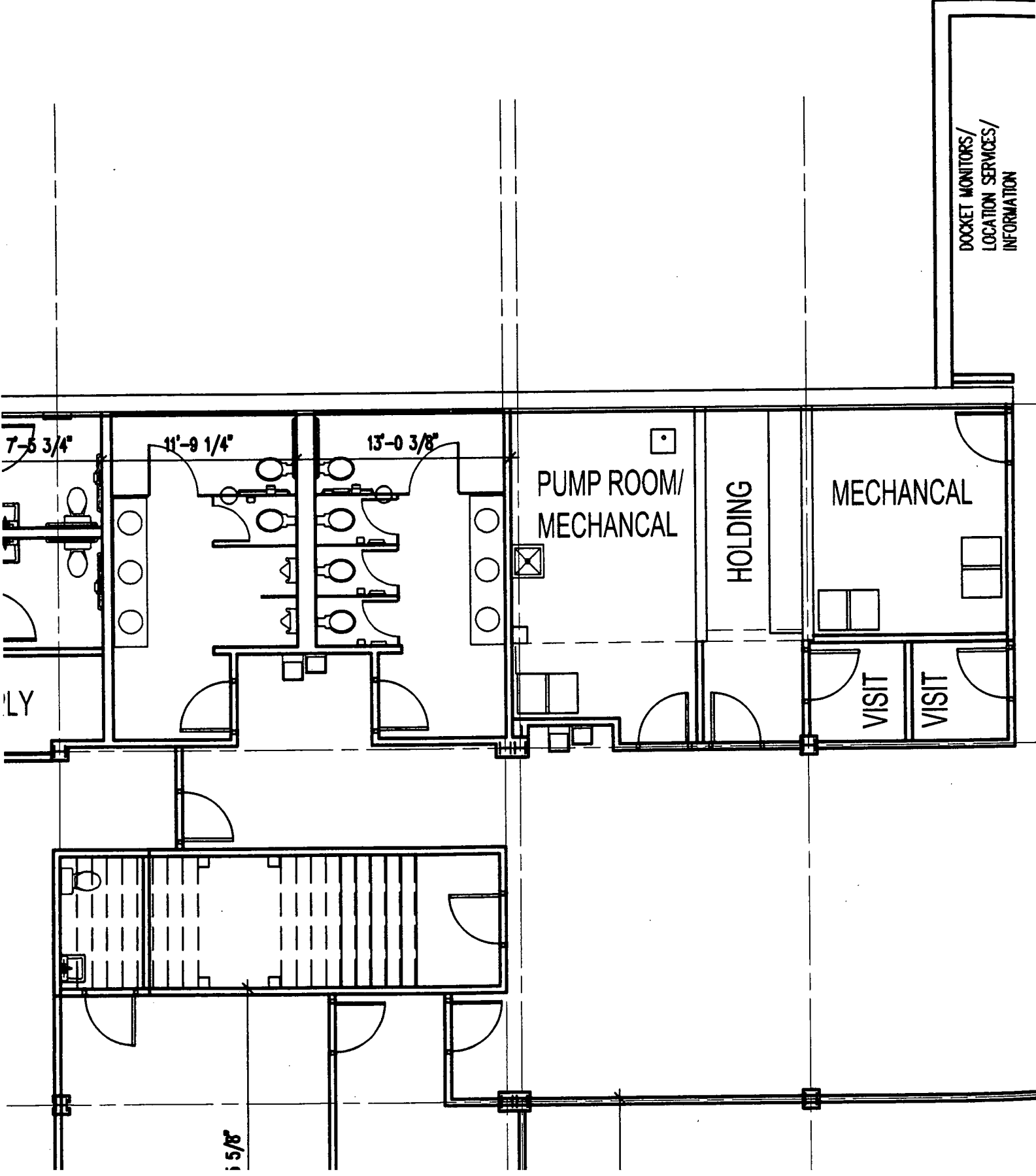
11'-9"

ATT. CONF.

6'-7 5/8"

SUPPLY

41'-10 1/8"



7'-5 3/4"

11'-9 1/4"

13'-0 3/8"

LY

PUMP ROOM/
MECHANICAL

HOLDING

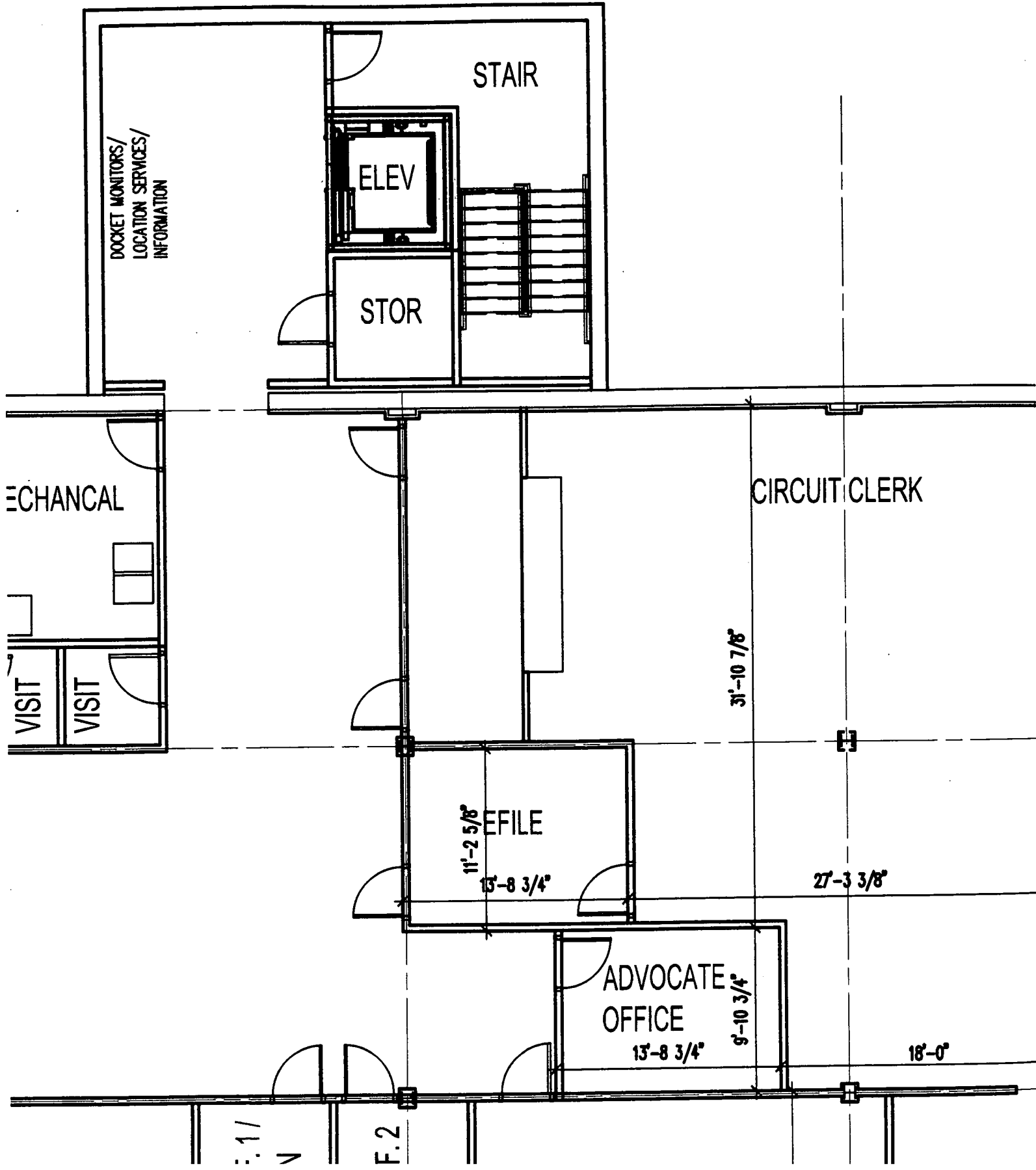
MECHANICAL

VISIT

VISIT

DOCKET MONITORS/
LOCATION SERVICES/
INFORMATION

5'-5/8"



CLERK

CIRCUIT CLERK
OFFICE

14'-3 3/8"

OFFICE /
SERVER ROOM

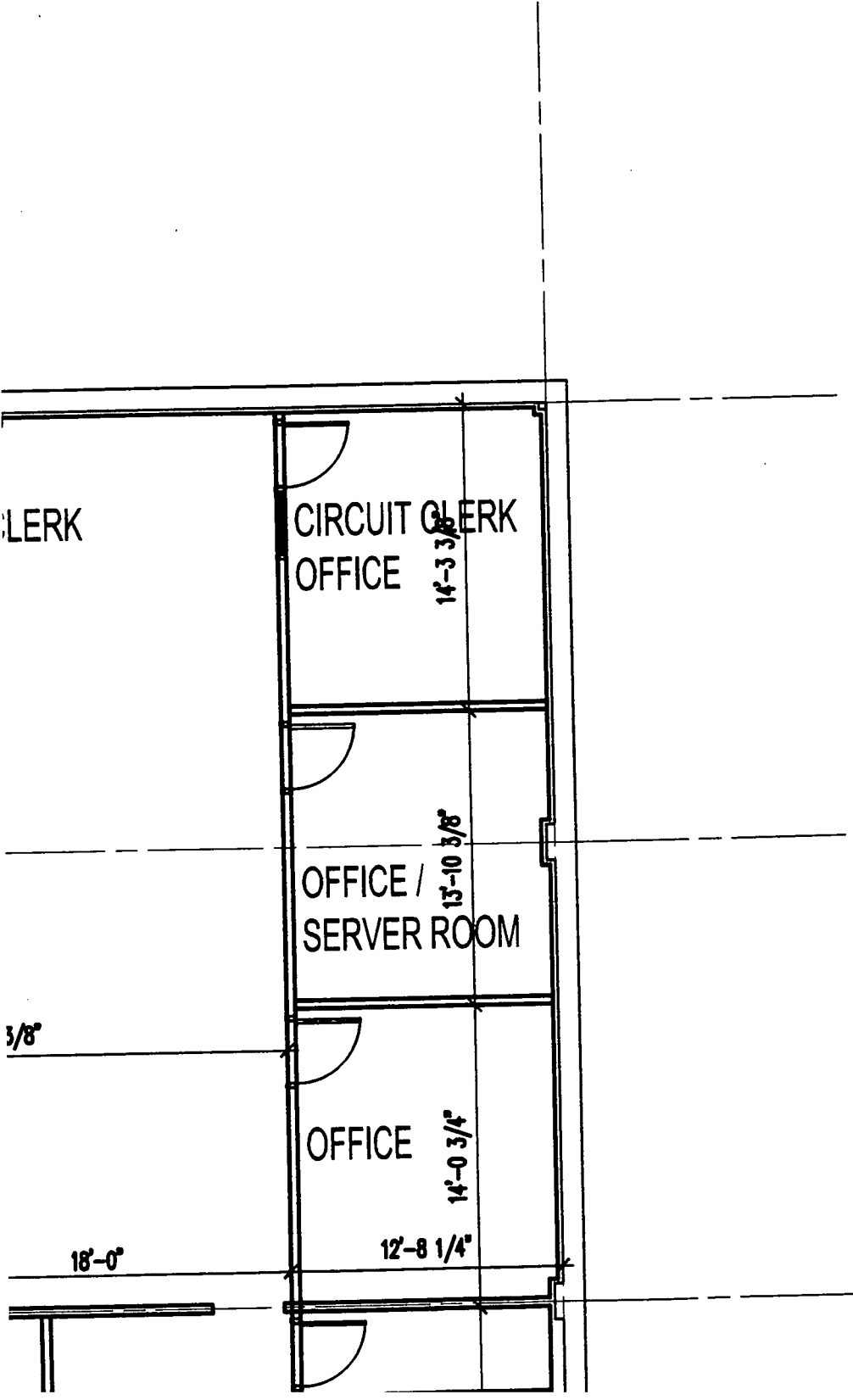
13'-10 3/8"

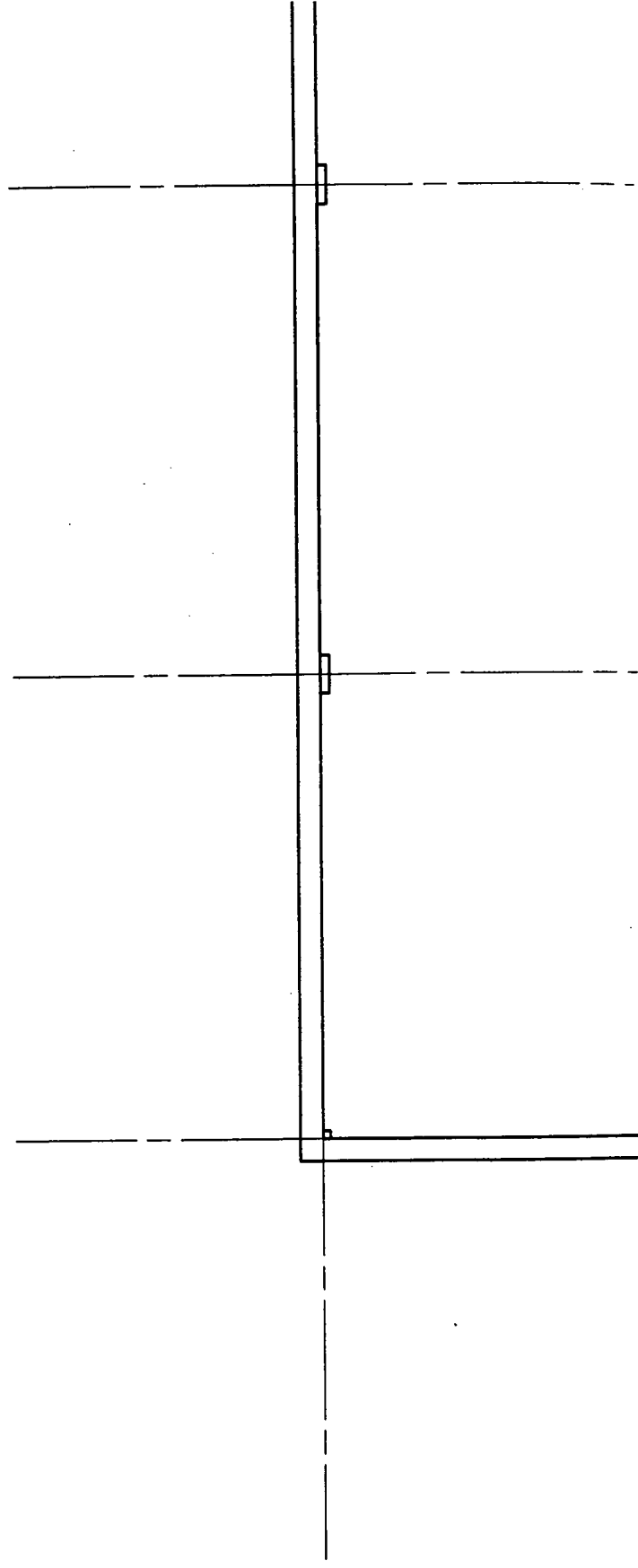
OFFICE

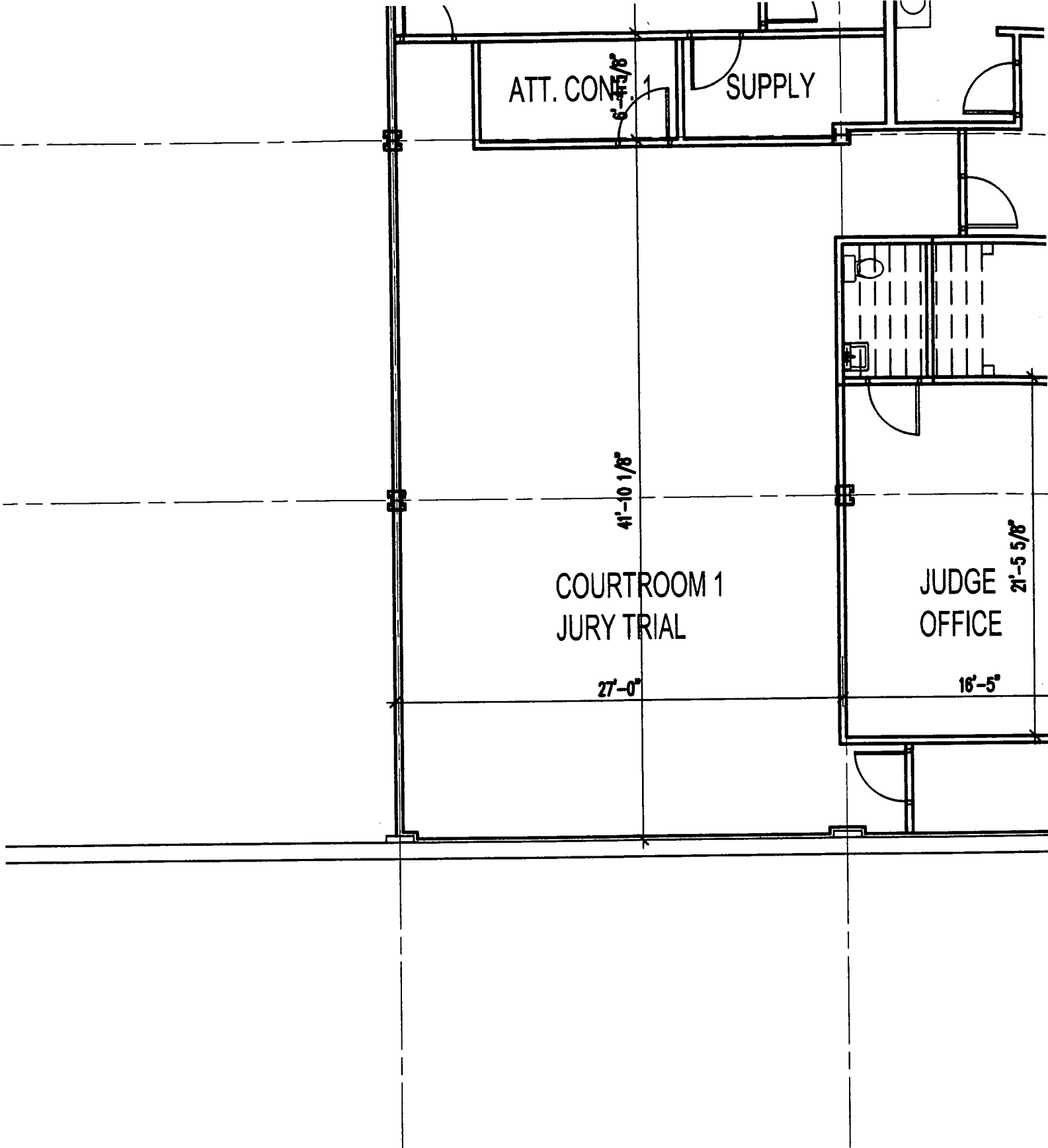
14'-0 3/4"

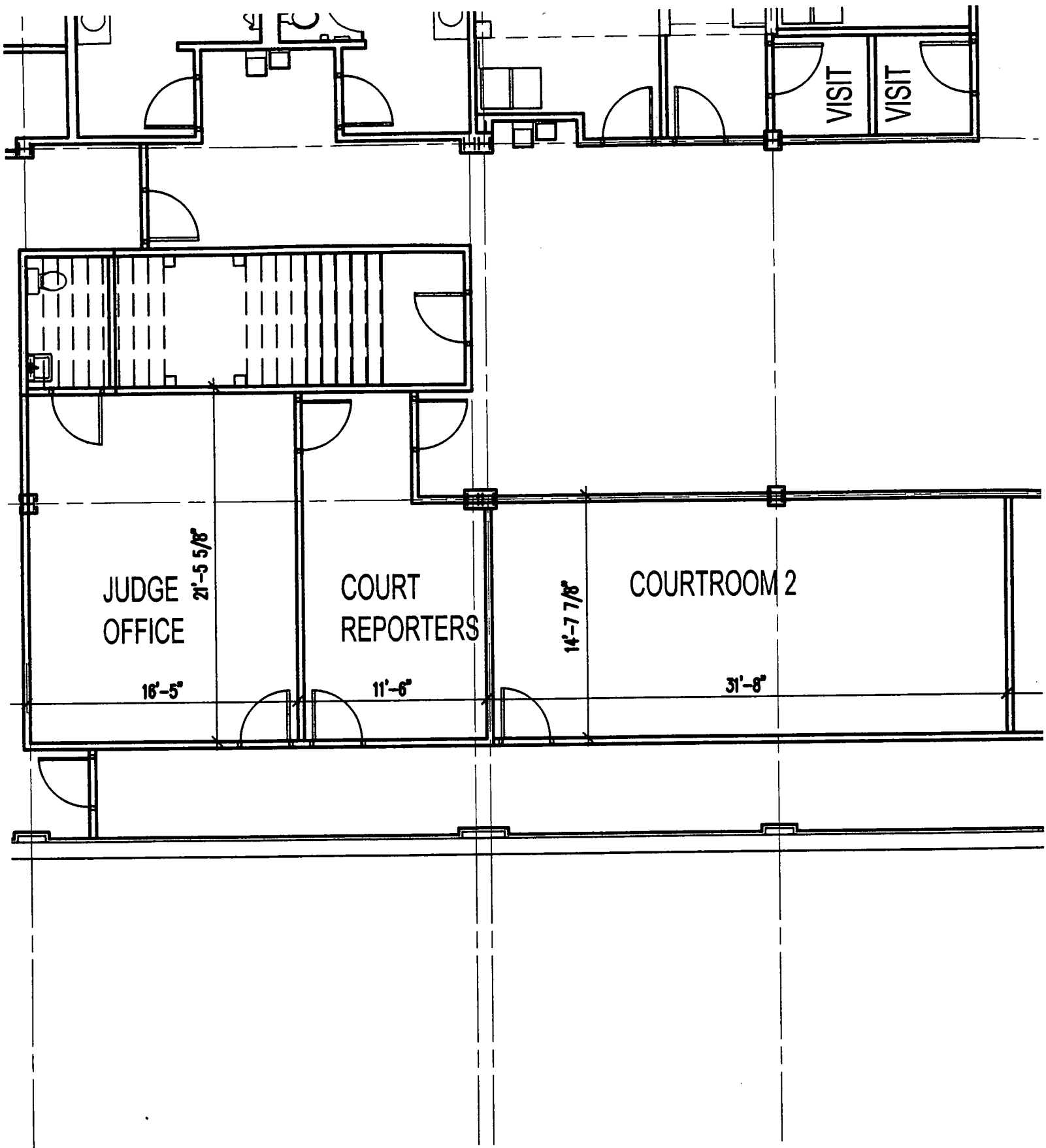
18'-0"

12'-8 1/4"









JUDGE
OFFICE

21'-5 5/8"

16'-5"

COURT
REPORTERS

11'-6"

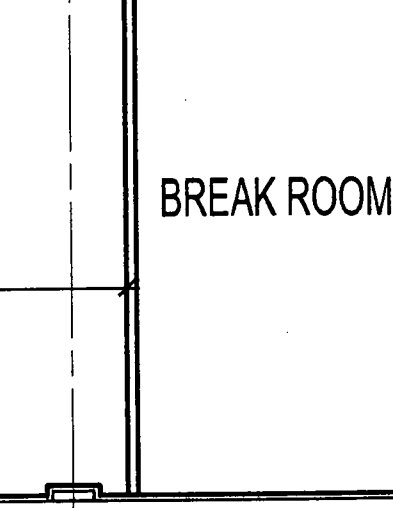
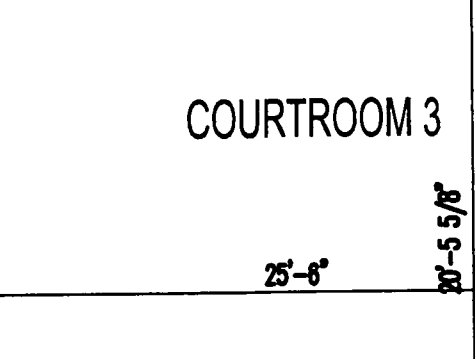
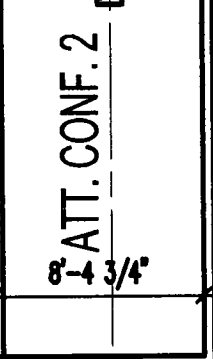
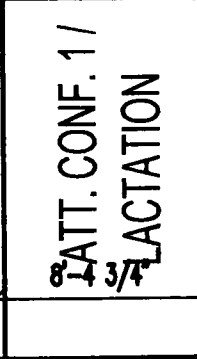
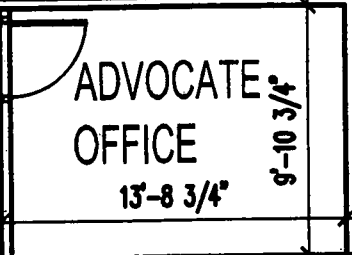
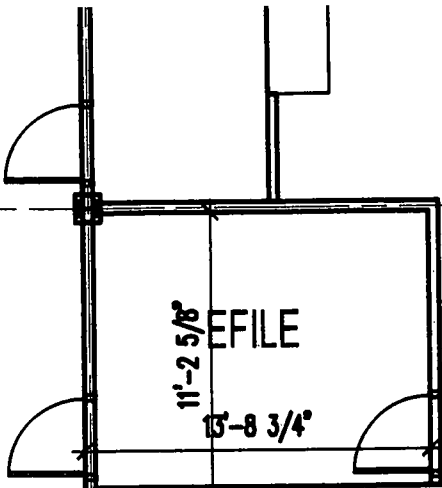
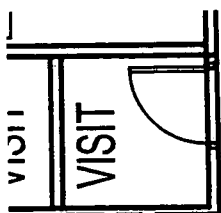
COURTROOM 2

31'-8"

14'-7 7/8"

VISIT

VISIT



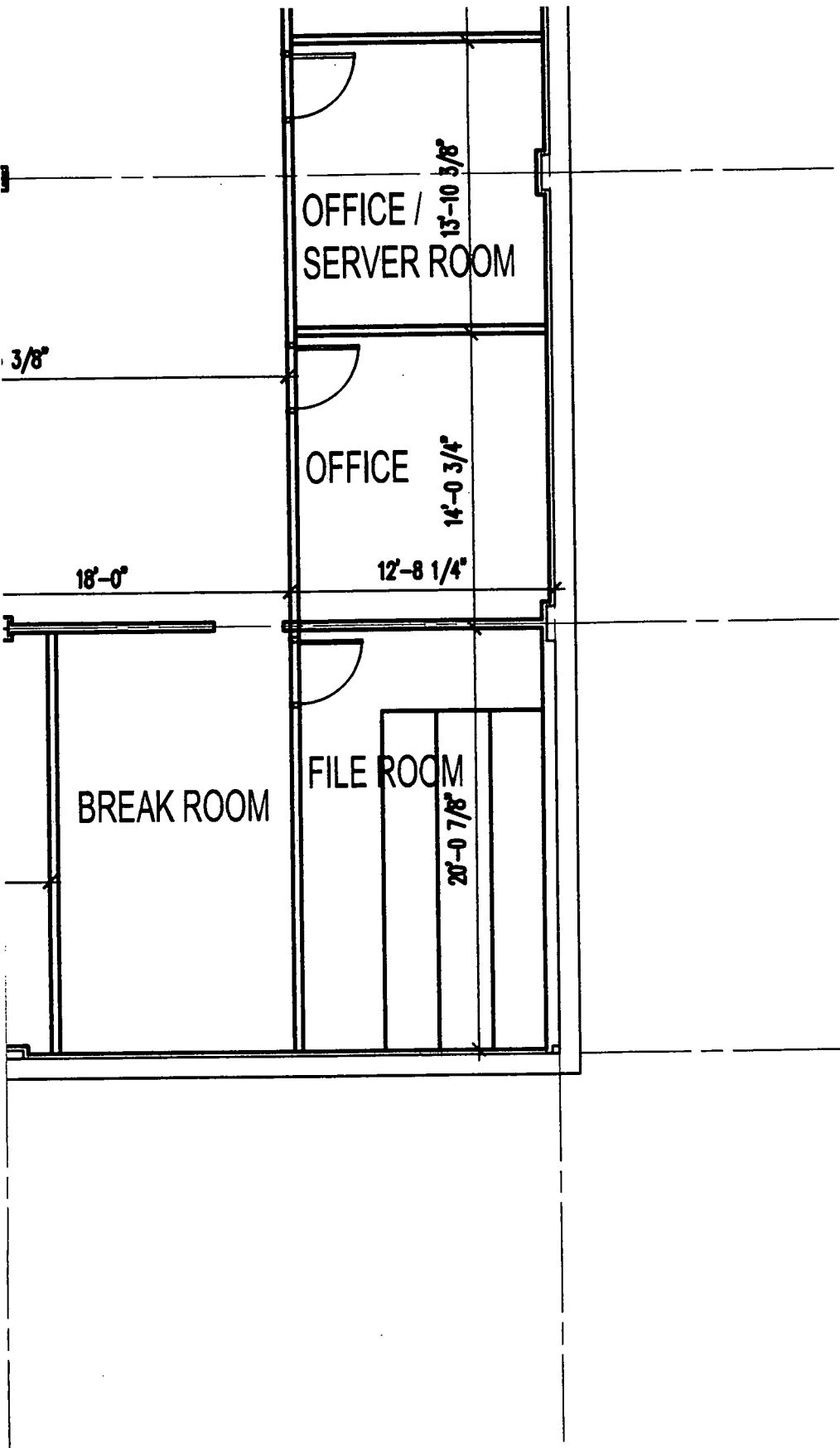
31'-10 7/8"

27'-3 3/8"

18'-0"

25'-6"

20'-5 5/8"



OFFICE /
SERVER ROOM

13'-10 3/8"

OFFICE

14'-0 3/4"

12'-8 1/4"

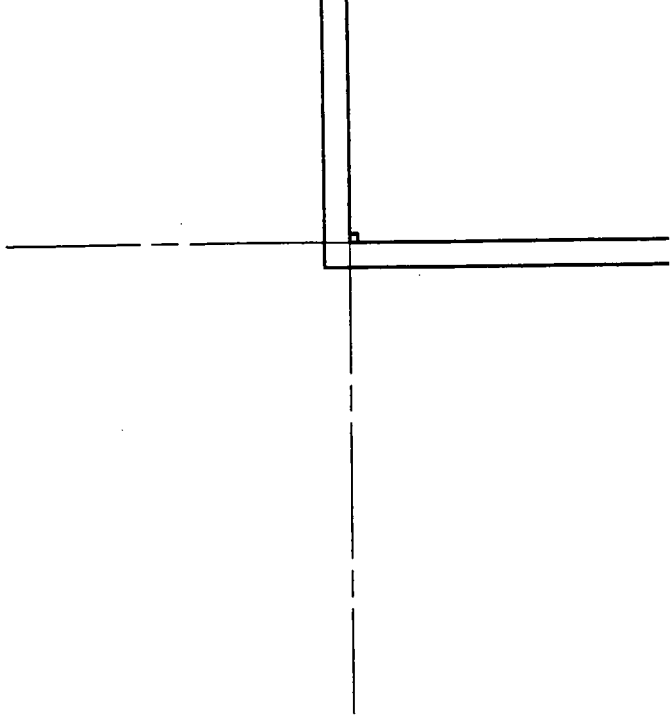
FILE ROOM

20'-0 7/8"

BREAK ROOM

18'-0"

3/8"



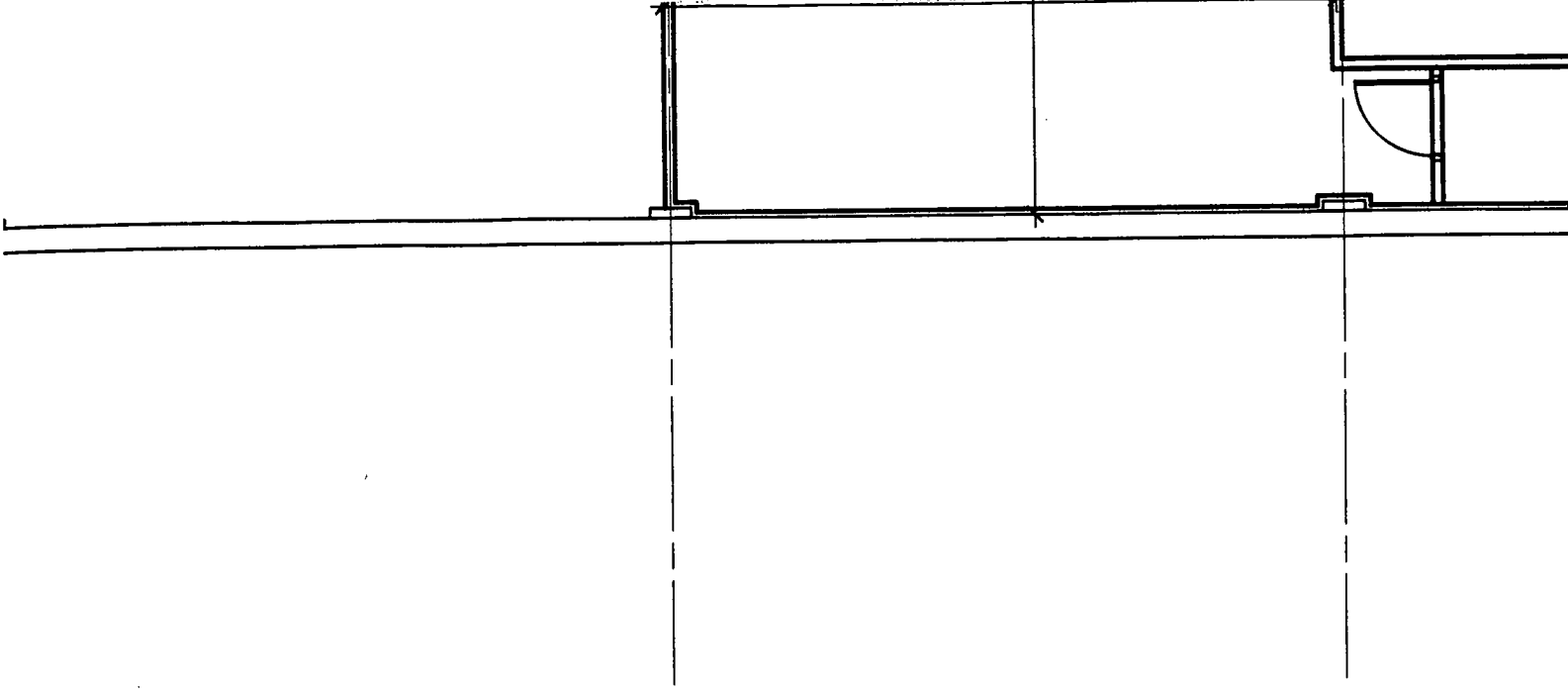
CONCEPT FLC

KELLY
KaC

ARCHITECTURE & CONSULTING, LLC

11305 Fox Hunters Road, Mulkeytown, IL 62865
618.218.4641 www.kellyacllc.com

ILLINOIS DESIGN FIRM LICENSE NO. - 184.007202

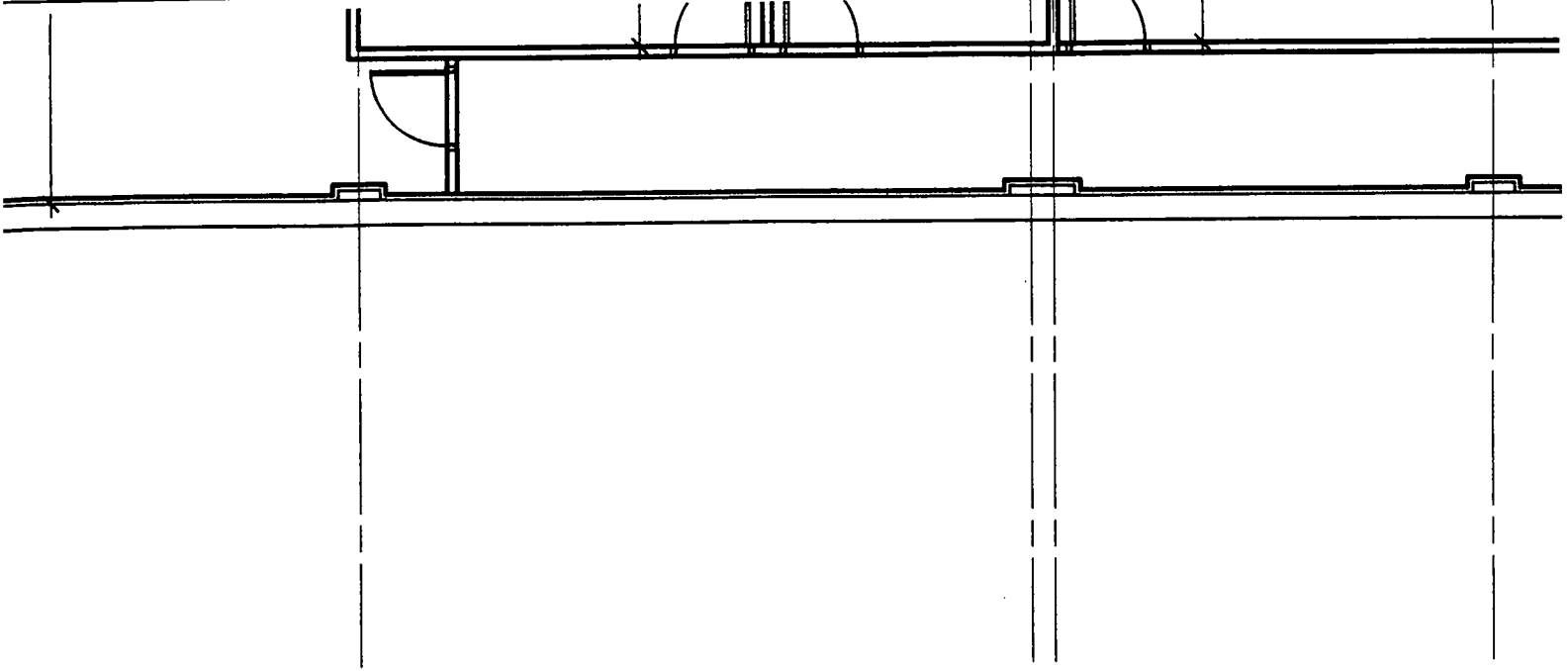


FLOOR PLAN — E

© Copyright (as dated below).
This drawing and all reproductions thereof are the property of KELLY Architecture & Consulting, LLC (KAC). It is intended for the sole use of the project named hereon. Reproduction without the written consent of KAC is unlawful. All copies are to be returned to KAC upon project completion.

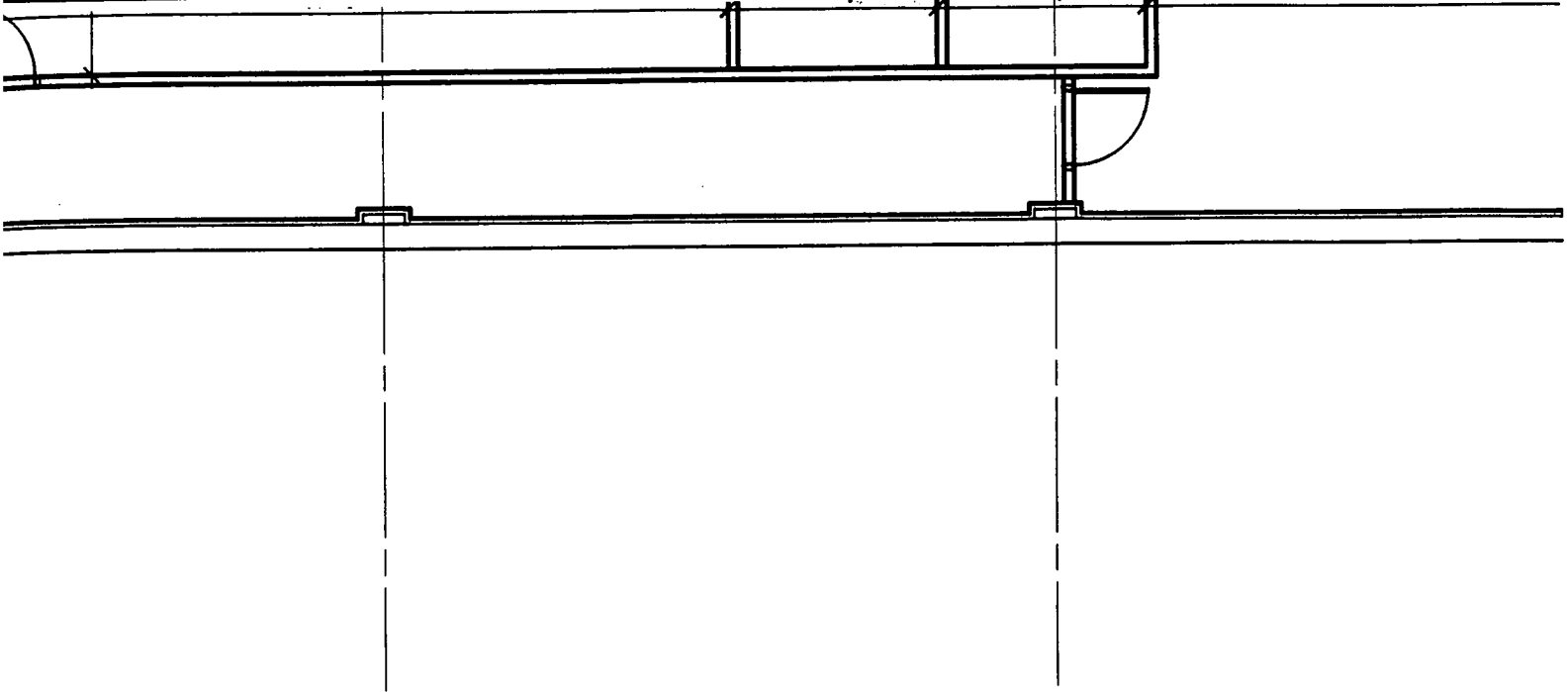
Subject: SKETCHES

Date: 06/11/19



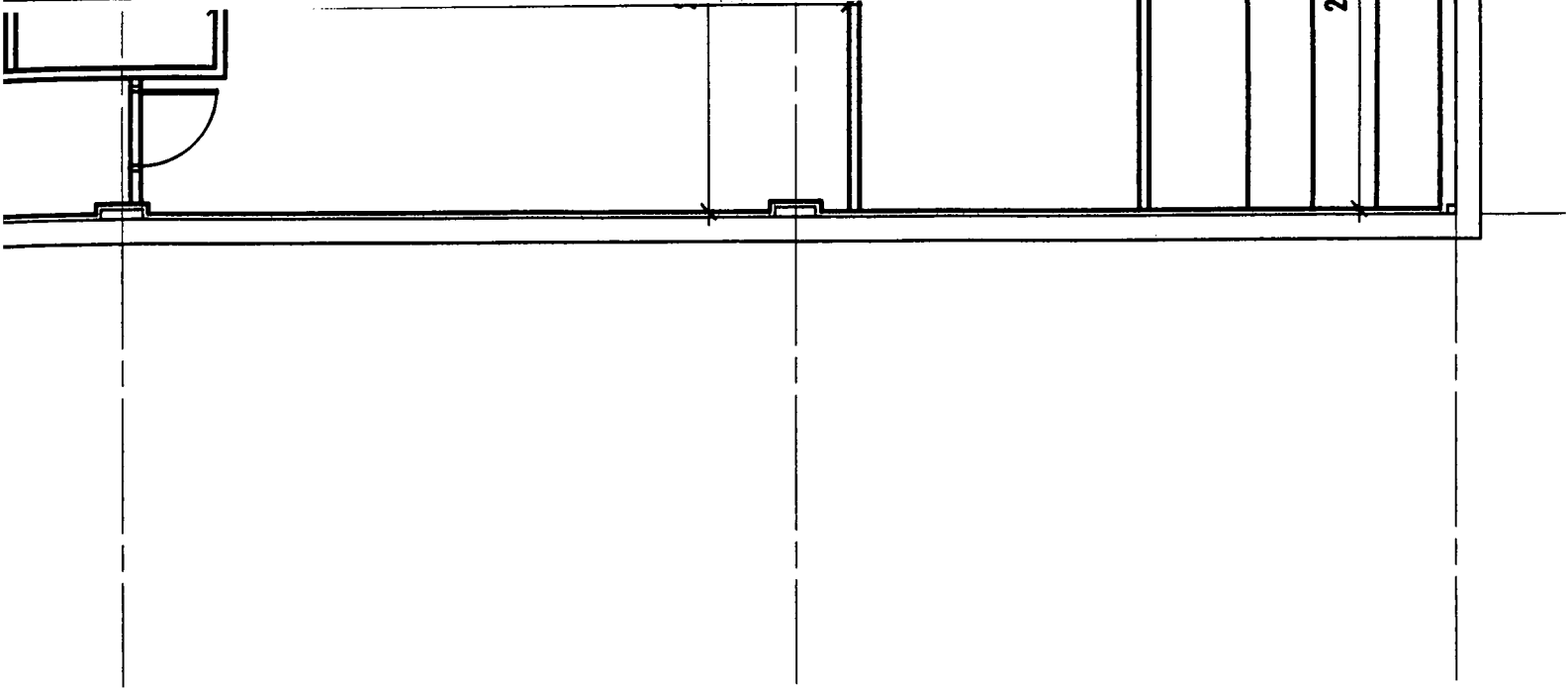
AN — BASEMENT

CHES



ENT 1/16" - 1'-0"





'-0''



20

SK11

KAC 19002